

GRES PORCELLANATO TECNICO
 TECHNICAL PORCELAIN STONWARE
 GRES CÉRAME TECHNIQUE
 TECHNISCHES FEINSTEINZEUG
 GRES PORCELÁNICO TECNICO
 ТЕХНИЧЕСКИЙ КЕРАМИЧЕСКИЙ ГРАНИТ

RETTIFICATO 30x30 LEVIGATO
 RECTIFIED 30x30 POLISHED
 RECTIFIE 30x30 POLI
 GESCHLIFFEN 30x30 POLIERT
 RECTIFICADO 30x30 PULIDO
 РЕТИФИЦИРОВАННАЯ 30x30 ПОЛИРОВАННАЯ

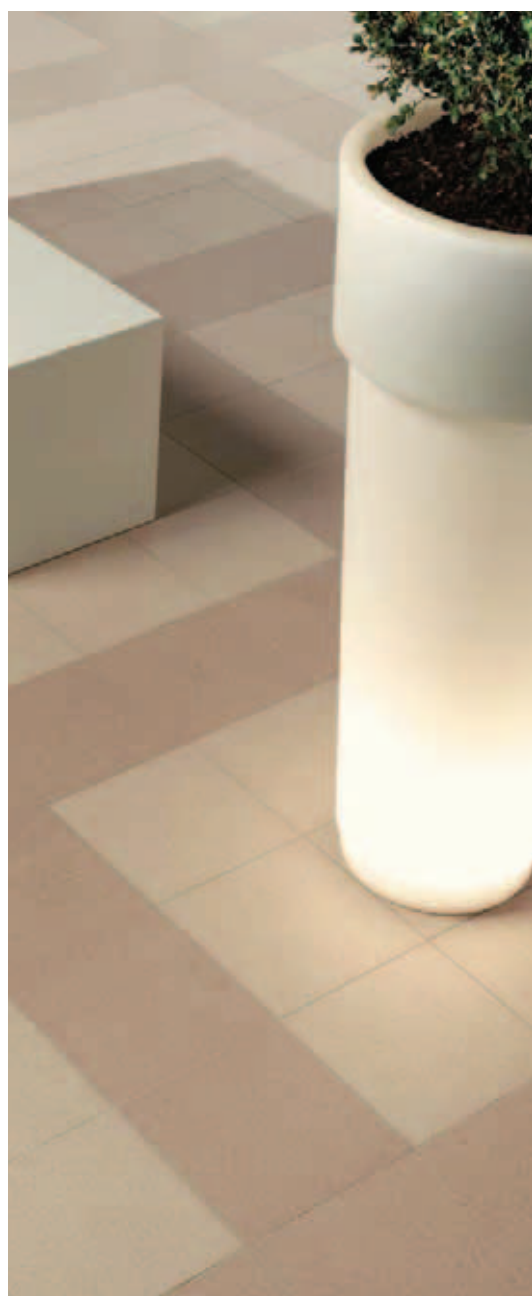
Formato - Spessore / Size - Thickness
 Format - Epaisseur / Format - Stärke
 Formato - Espesor / Размер - Толщина

30x30 (12"x12")	- 8,6 mm
30x30 (12"x12") Levigato Rettificato	- 8,0 mm
20x20 (8"x8")	- 8,6 mm
20x20 (8"x8") *	- 12 mm
12,5x25 (5"x10")	- 8 mm

* Spessorati
 Thick
 À épaisseur majorée
 Überstärke
 Espesorado
 Утолщенные

Superfici / Surfaces
 Surfaces / Oberflächen
 Superficies / Поверхности

MATT, STRUTTURATO, LEVIGATO, ANTISDRUCCIOLO TIPO T
 MATT, TEXTURED, POLISHED, ANTI-SLIP TYPE T
 MAT, STRUCTURÉ, POLI, ANTIDÉRAPANT DU TYPE T
 MATT, STRUKTURIERT, POLIERT, RUTSCHSICHERHEIT TYP T
 MATE, ESTRUCTURADO, PULIDO, ANTIDESLIZAMIENTO TIPO T
 МАТОВЫЙ, СТРУКТУРНАЯ, ПОЛИРОВАННАЯ,
 ПРОТИВОСКОЛЬЗЯЩАЯ ПОВЕРХНОСТЬ ТИПА Т



Caratteristiche tecniche / Technical data

Caracteristiques techniques / Technische daten / Características técnicas / Технические характеристики

Conforme alla norma	EN 14411 (ISO 13006)	Appendice	G	Gruppo	Bla
Complies with	EN 14411 (ISO 13006)	Appendix	G	Group	Bla
Conforme à la norme	EN 14411 (ISO 13006)	Appendice	G	Groupe	Bla
Entsprechend	EN 14411 (ISO 13006)	Anhang	G	Gruppe	Bla
Conforme a la norma	EN 14411 (ISO 13006)	Apéndice	G	Grupo	Bla
Соответствует норме	EN 14411 (ISO 13006)	Приложение	G	Группа	Bla

Matt / Matt
 30x30 (12"x12")

Levigato Rettificato
 Polished Rectified
 30x30 (12"x12")

Strutturato / Textured
 30x30 (12"x12")

ISO 10545-2 ±0,3%	ISO 10545-2 ±0,1%	ISO 10545-2 ±0,3%
ISO 10545-2 ±0,3%	ISO 10545-2 ±0,1%	ISO 10545-2 NON APPLICABILE / NOT APPLICABLE
ISO 10545-3 ≤0,1%	ISO 10545-3 ≤0,1%	ISO 10545-3 ≤0,1%
ISO 10545-4 S ≥1500 N R ≥45 N/mm ²	ISO 10545-4 S ≥1300 N R ≥40 N/mm ²	ISO 10545-4 S ≥1500 N R ≥45 N/mm ²
EN 101 CONFORME / SUITABLE FOR	EN 101 MOHS 5	EN 101 CONFORME / SUITABLE FOR
ISO 10545-6 ≤130 mm ³	ISO 10545-6 ≤150 mm ³	ISO 10545-6 ≤130 mm ³
ISO 10545-8 ≤7 MK ⁻¹	ISO 10545-8 ≤7 MK ⁻¹	ISO 10545-8 ≤7 MK ⁻¹
ISO 10545-9 RESISTE / RESISTANT	ISO 10545-9 RESISTE / RESISTANT	ISO 10545-9 RESISTE / RESISTANT
ISO 10545-12 RESISTE / RESISTANT	ISO 10545-12 RESISTE / RESISTANT	ISO 10545-12 RESISTE / RESISTANT
METODO B.C.R.A. >0,40	METODO B.C.R.A. <0,40	METODO B.C.R.A. >0,40
ASTM C 1028 (S.C.O.F.) ≥0,60 DRY ≥0,60 WET	ASTM C 1028 (S.C.O.F.) ≥0,60 DRY ≤0,50 WET	ASTM C 1028 (S.C.O.F.) ≥0,60 DRY ≥0,60 WET
DIN 51130 R9	DIN 51130 N.C.	DIN 51130 R11
ISO 10545-13 RESISTE / RESISTANT	ISO 10545-13 RESISTE / RESISTANT	ISO 10545-13 RESISTE / RESISTANT
ISO 10545-14 5	ISO 10545-14 5	ISO 10545-14 5




Matt / Matt
20x20 (8"x8")
12,5x25 (5"x10")

Spessorati / Thick
20x20 (8"x8")


Strutturato / Textured
20x20 (8"x8")

Antisdrucciolo tipo T
Anti-slip type T
20x20 (8"x8")

 ISO 10545-2
CONFORME / SUITABLE FOR

 ISO 10545-2
±0,3%

 ISO 10545-3
≤0,1%

 ISO 10545-4
S ≥1500 N R ≥45 N/mm²

 EN 101
CONFORME / SUITABLE FOR


 ISO 10545-6
≤130 mm³

 ISO 10545-8
≤7 MK⁻¹

 ISO 10545-9
RESISTE / RESISTANT

 ISO 10545-12
RESISTE / RESISTANT


 METODO B.C.R.A.
>0,40

 ASTM C 1028 (S.C.O.F.)
≥0,60 DRY ≥0,60 WET

 DIN 51130
R9

 ISO 10545-13
RESISTE / RESISTANT

 ISO 10545-14
5

 ISO 10545-2
CONFORME / SUITABLE FOR

 ISO 10545-2
±0,3%

 ISO 10545-3
≤0,1%

 ISO 10545-4
S ≥3000 N


 EN 101
CONFORME / SUITABLE FOR

 ISO 10545-6
≤130 mm³

 ISO 10545-8
≤7 MK⁻¹


 ISO 10545-9
RESISTE / RESISTANT

 ISO 10545-12
RESISTE / RESISTANT


 METODO B.C.R.A.
>0,40

 ASTM C 1028 (S.C.O.F.)
≥0,60 DRY ≥0,60 WET

 DIN 51130
R9


 ISO 10545-13
RESISTE / RESISTANT

 ISO 10545-14
5

 ISO 10545-2
CONFORME / SUITABLE FOR

 ISO 10545-2
NON APPLICABILE / NOT APPLICABLE

 ISO 10545-3
≤0,1%

 ISO 10545-4
S ≥1500 N R ≥45 N/mm²

 EN 101
CONFORME / SUITABLE FOR

 ISO 10545-6
≤130 mm³

 ISO 10545-8
≤7 MK⁻¹


 ISO 10545-9
RESISTE / RESISTANT

 ISO 10545-12
RESISTE / RESISTANT

 METODO B.C.R.A.
>0,40

 ASTM C 1028 (S.C.O.F.)
≥0,60 DRY ≥0,60 WET

 DIN 51130
R11


 ISO 10545-13
RESISTE / RESISTANT

 ISO 10545-14
5

 ISO 10545-2
CONFORME / SUITABLE FOR

 ISO 10545-2
NON APPLICABILE / NOT APPLICABLE

 ISO 10545-3
≤0,1%

 ISO 10545-4
S ≥1500 N R ≥45 N/mm²


 EN 101
CONFORME / SUITABLE FOR

 ISO 10545-6
≤130 mm³

 ISO 10545-8
≤7 MK⁻¹

 ISO 10545-9
RESISTE / RESISTANT

 ISO 10545-12
RESISTE / RESISTANT

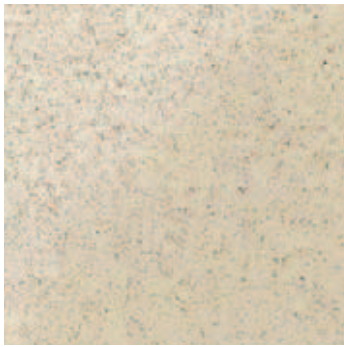
 METODO B.C.R.A.
>0,40

 ASTM C 1028 (S.C.O.F.)
≥0,60 DRY ≥0,60 WET

 DIN 51130
R12 V4

 ISO 10545-13
RESISTE / RESISTANT

 ISO 10545-14
5



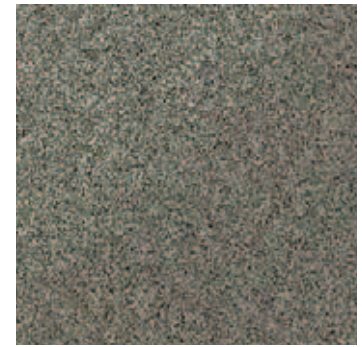
3yLP Bianco Lasa 30 Levigato *
30x30 - 12"x12"



3yL4 Luserna 30 Levigato *
30x30 - 12"x12"



3yL8 Rosa Baveno 30 Levigato *
30x30 - 12"x12"



3yL3 Serizzo 30 Levigato *
30x30 - 12"x12"



3yL5 Sienite 30 Levigato *
30x30 - 12"x12"



3yL0 Giallo Reale 30 Levigato *
30x30 - 12"x12"



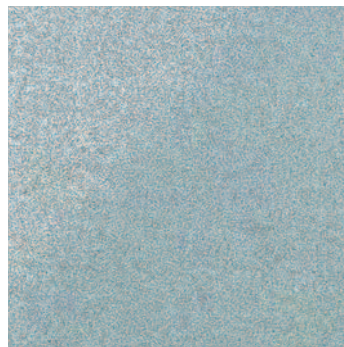
3yLZ Terra di Siena 30 Levigato *
30x30 - 12"x12"



3yLL Grafite 30 Levigato *
30x30 - 12"x12"



3yLQ Libeccio 30 Levigato *
30x30 - 12"x12"



3yL1 Basalto 30 Levigato *
30x30 - 12"x12"

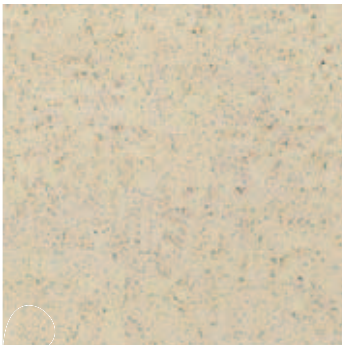


3yLØ Verde Giada 30 Levigato *
30x30 - 12"x12"



3yLM Verde Alpi 30 Levigato *
30x30 - 12"x12"

* Rettificato.
Rectified.
Rectifié.
Geschliffen.
Rectificado.
Ретифицированная.



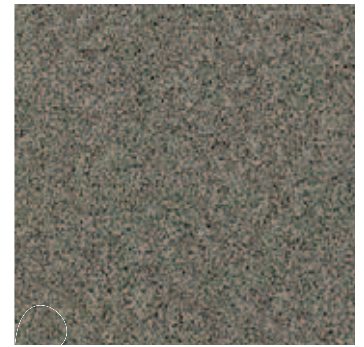
3y0P Bianco Lasa 30 Matt
30x30 - 12"x12"



3y04 Luserna 30 Matt
30x30 - 12"x12"



3y08 Rosa Baveno 30 Matt
30x30 - 12"x12"



3y03 Serizzo 30 Matt
30x30 - 12"x12"



3y05 Sienite 30 Matt
30x30 - 12"x12"



3y00 Giallo Reale 30 Matt
30x30 - 12"x12"



3y0Z Terra di Siena 30 Matt
30x30 - 12"x12"



3y0L Grafite 30 Matt
30x30 - 12"x12"



3y0Q Libeccio 30 Matt
30x30 - 12"x12"



3y01 Basalto 30 Matt
30x30 - 12"x12"



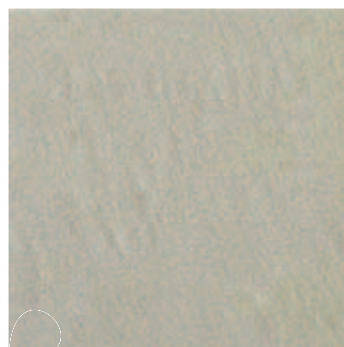
3y00 Verde Giada 30 Matt
30x30 - 12"x12"



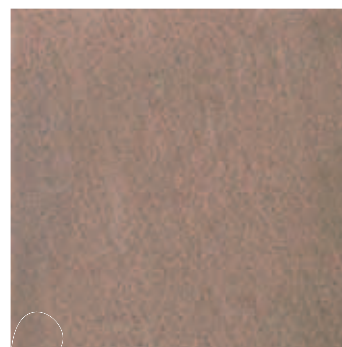
3y0M Verde Alpi 30 Matt
30x30 - 12"x12"



3ySP Bianco Lasa 30 Strutturato
30x30 - 12"x12"



3yS4 Luserna 30 Strutturato
30x30 - 12"x12"



3yS8 Rosa Baveno 30 Strutturato
30x30 - 12"x12"



3yS3 Serizzo 30 Strutturato
30x30 - 12"x12"

GRANIGLIATI



KYØP Bianco Lasa 20 Matt
20x20 - 8"x8"



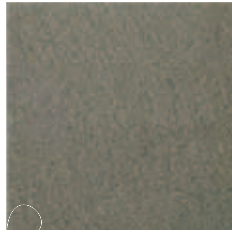
KYØ4 Luserna 20 Matt
20x20 - 8"x8"



KYØ3 Serizzo 20 Matt
20x20 - 8"x8"



KYSP Bianco Lasa 20 Strutturato
20x20 - 8"x8"



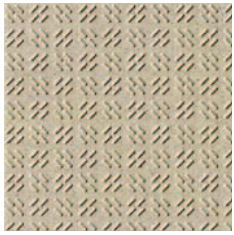
KYS3 Serizzo 20 Strutturato
20x20 - 8"x8"



KyPP Bianco Lasa 20 Sp. 12 mm.
20x20 - 8"x8"



KyP3 Serizzo 20 Sp. 12 mm.
20x20 - 8"x8"



KYTP Bianco Lasa 20 Antisdrucciolo tipo T
20x20 - 8"x8"





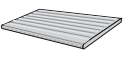
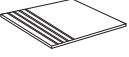
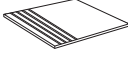





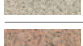






5W+P Bianco Lasa Matt 12,5x25
12,5x25 - 5"x10"

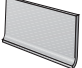


5W+8 Rosa Baveno Matt 12,5x25
12,5x25 - 5"x10"

Pezzi speciali / Special pieces

Pièces spéciales / Sonderteile / Piezas especiales / Специальные элементы

					
	10x30 - 4"x12" Battiscopa Matt	10x30 - 4"x12" Battiscopa Levigato	8x20 - 3,4"x8" Gradino	30x30 - 12"x12" Gradino Matt	30x30 - 12"x12" Gradino Strutturato
 Basalto	6WØ1	6WL1	-	3yG1	-
 Bianco Lasa	6WØP	6WLP	QGGP	3yGP	3yRP
 Giallo Reale	6WØ0	6WLO	-	3yG0	-
 Grafite	6WØL	6WLL	-	3yGL	-
 Libeccio	6WØQ	6WLQ	-	3yGQ	-
 Luserna	6WØ4	6WL4	-	3yG4	3yR4
 Rosa Baveno	6WØ8	6WL8	-	3yG8	3yR8
 Serizzo	6WØ3	6WL3	-	3yG3	3yR3
 Sienite	6WØ5	6WL5	-	3yG5	-
 Terra di Siena	6WØZ	6WLZ	-	3yGZ	-
 Verde Alpi	6WØM	6WLM	-	3yGM	-
 Verde Giada	6WØØ	6WLØ	-	3yGØ	-

						
	10x20 - 4"x8" Sguscia C.B.	H. 10 - 4" Sguscia Ang. Esterno C.B.	H. 10 - 4" Sguscia Ang. Interno C.B.	10x20 - 4"x8" Racc. a Pavimento	H. 10 - 4" Angolo Esterno	H. 10 - 4" Angolo Interno
 Bianco Lasa	1WBP	8YEP	8YIP	1WØP	8WEP	8WAP
 Luserna	1WB4	8YE4	8YI4	1WØ4	8WS4	8WA4
 Rosa Baveno	1WB8	8YE8	8YI8	1WØ8	8WS8	8WA8
 Serizzo	1WB3	8YE3	8YI3	1WØ3	8WS3	8WA3