



HTS 10
45x45 18"x18"
□072



HTS 10
15x45 6"x18"
□090



Ethos A / HTS 10
6x6 23/8"x23/8"
□007



Ethos F / HTS 10
15x45 6"x18"
□040



Ethos A / HTS 10
15x15 6"x6"
□020



HTS 10
30x45 12"x18"
□072



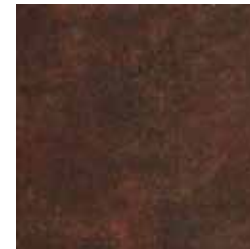
HTS 10
30x30 12"x12"
□070



Mosaico / HTS 10
30x30 12"x12"
□293



Modus Grey
6x30 23/8"x12"
□015



HTS 8
45x45 18"x18"
□072



HTS 8
15x45 6"x18"
□090



Ethos A / HTS 8
6x6 23/8"x23/8"
□007



Ethos F / HTS 8
15x45 6"x18"
□040



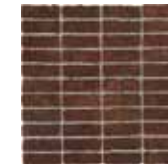
Ethos A / HTS 8
15x15 6"x6"
□020



HTS 8
30x45 12"x18"
□072



HTS 8
30x30 12"x12"
□070



Mosaico / HTS 8
30x30 12"x12"
□293



Modus Brown
6x30 23/8"x12"
□015

Pezzi Speciali Special Pieces • Formteile • Pièces spéciales



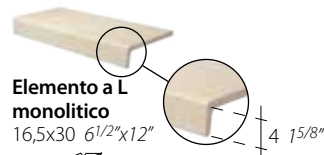
Battiscopa
8x30 3 1/8"x12"
Bullnose
Sockelleiste
Plinthes
□019



Gradone Lineare Monolitico
30x33 12"x13"
Step
Stufe
Nez de marche
□059



Gradone Angolare Monolitico
33x33 13"x13"
Corner step
Eckstufe
Nez de marche angulaire
□085



Elemento a L monolitico
16,5x30 6 1/2"x12"
□075



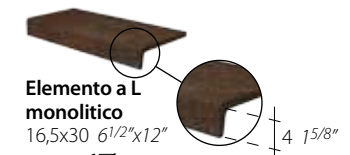
Battiscopa
8x30 3 1/8"x12"
Bullnose
Sockelleiste
Plinthes
□019



Gradone Lineare Monolitico
30x33 12"x13"
Step
Stufe
Nez de marche
□059



Gradone Angolare Monolitico
33x33 13"x13"
Corner step
Eckstufe
Nez de marche angulaire
□085



Elemento a L monolitico
16,5x30 6 1/2"x12"
□075

Package	45x45	30x45	30x30	15x45
Pieces	6	8	12	16
Mq.	1,22	1,08	1,08	1,08
Kg.	26,73	24,60	24,00	24,00
Boxes	52	44	44	44
Mq.	63,44	47,52	47,52	47,52
Kg.	1410,00	1077,00	1077,00	1077,00

SHADE VARIATION			
LOW	MODERATE	HIGH	RANDOM

HARD

GRES PORCELLANATO A TUTTA MASSA	SPESSORE	RESISTENZA AL GELO	ASSORBIMENTO D'ACQUA	CAMPO D'IMPIEGO CONSIGLIATO	RESISTENZA CHIMICA	RESISTENZA ALLO SCIVOLAMENTO	ASCIUTTO	BAGNATO
THROUGH-BODY PORCELAIN TILE	THICKNESS	FROST RESISTANCE	WATER ABSORPTION	RECOMMENDED USE	CHEMICAL RESISTANCE	SLIPPING RESISTANCE	DRY	WET
DURCHGEFÄRBTES FEINSTEINZEUG	STÄRKE	FROSTBESTÄNDIGKEIT	WASSERAUFNAHME	ANWENDUNGSBEREICH	BESTÄNDIGKEIT GEGEN CHEMIKALIEN	RUTSCHFESTIGKEIT	TROCKEN	NASS
LE GRÈS CÉRAME PLEINE MASSE	ÉPAISSEUR	RESISTANCE AU GEL	ABSORPTION D'EAU	PIÈCE D'EMPLOI CONSEILLÉE	RESISTANCE CHIMIQUE	FACTEUR DE RESISTANCE ANTIGLISSEMENT	SEC	MOUILLE
	10,3 mm	RESISTANT ISO 10545.12	~0,1% ISO 10545.3		GA UNI EN ISO 10545.13 5 UNI EN ISO 10545.14	DIN 51130 DIN 51097 ANSI 137.1 (DCOF)	R 10	- A+B+C ≥0,42

Price codes: □Mq. □Ml. □Pieces

HARD HTS