

only **easy wonder**

EMIL
CERAMICA

STILE SENZA TEMPO



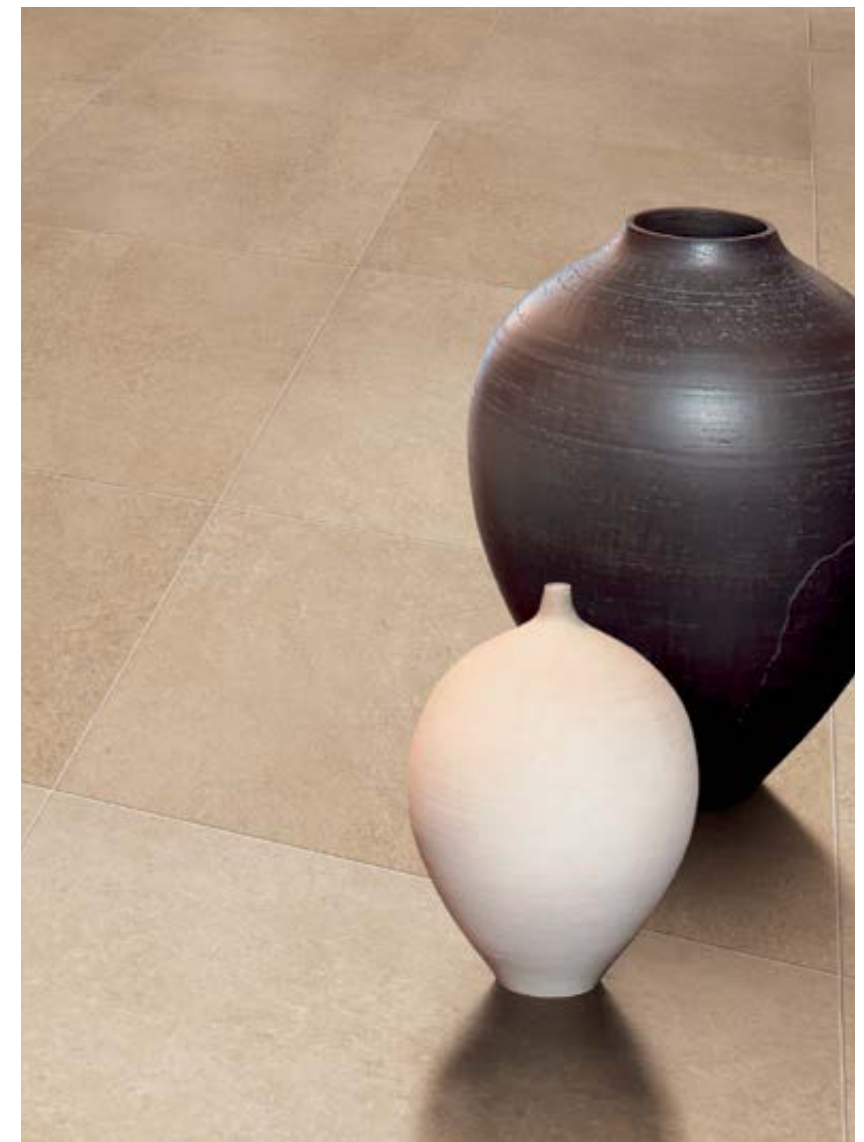


459C7P Rosa 45x45 Lappato
459C7PB Elegance Inserto Rosa 45x45 Lappato





459C1 Beige 45x45 Naturale
969C1PA Intarsio Beige 8,5x45 Lappato
M309C1 Mosaico Mattoncino Beige 30x30





639C9 Antracite 30x60 Naturale
979C9F Elegance Antracite 10x60 Naturale



459C9P Antracite 45x45 Lappato

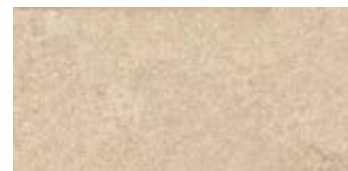


BEIGE

ROSA

MARRON

ANTRACITE



30x60 (11^{13/16}"x23^{5/8}")
639C1 Naturale



●54 30x60 (11^{13/16}"x23^{5/8}")
639C7 Naturale

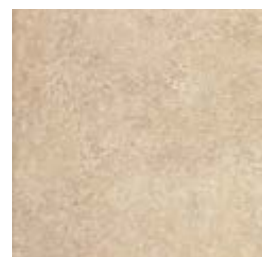


●54 30x60 (11^{13/16}"x23^{5/8}")
639C6 Naturale



●54 30x60 (11^{13/16}"x23^{5/8}")
639C9 Naturale

●54



45x45 (17^{11/16}"x17^{11/16}")
459C1 Naturale ●52
459C1P Lappato rett. ●67



45x45 (17^{11/16}"x17^{11/16}")
459C7 Naturale ●52
459C7P Lappato rett. ●67



45x45 (17^{11/16}"x17^{11/16}")
459C6 Naturale ●52
459C6P Lappato rett. ●67



45x45 (17^{11/16}"x17^{11/16}")
459C9 Naturale ●52
459C9P Lappato rett. ●67

●67

MOS. MATTONCINO*
 MIX LAPP./NAT.
 Tessera 4,7x9,8
 Chip (1^{7/8}"x3^{7/8}")



30x30 (11^{13/16}"x11^{13/16}")
M309C1 Beige ●95

INTARSIO LAPP.



8.5x45 (3^{3/8}"x17^{11/16}")
969C1PA Beige ●50

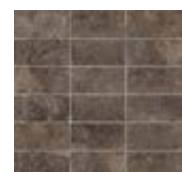


8.5x8.5 (3^{3/8}"x3^{3/8}")
089C1PA Beige ●25

●25



30x30 (11^{13/16}"x11^{13/16}")
M309C7 Rosa ●95



30x30 (11^{13/16}"x11^{13/16}")
M309C6 Marron ●95

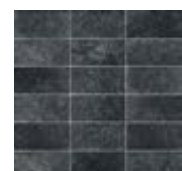


8.5x45 (3^{3/8}"x17^{11/16}")
969C6PA Marron ●50



8.5x8.5 (3^{3/8}"x3^{3/8}")
089C6PA Marron ●25

●25



30x30 (11^{13/16}"x11^{13/16}")
M309C9 Antracite ●95



8.5x45 (3^{3/8}"x17^{11/16}")
969C9PA Antracite ●50



8.5x8.5 (3^{3/8}"x3^{3/8}")
089C9PA Antracite ●25

●25

* su rete_mesh-mounted_sur trame_auf netz geklebt_sobre red_□□ □□□□□□

INSERTO ELEGANCE LAPP.

ELEGANCE NAT.

FASCIA ELEGANCE NAT.

ANGOLO
FASCIA ELEGANCE



45x45 (17^{11/16}"x17^{11/16}") ●86
459C1PB Beige



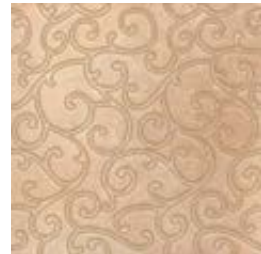
30x60 (11^{13/16}"x23^{5/8}") ●82
639C1C Beige



10x60 (3^{15/16}"x23^{5/8}") ●63
979C1F Beige



10x10 (3^{15/16}"x3^{15/16}") ●10
109C1F Beige



45x45 (17^{11/16}"x17^{11/16}") ●86
459C7PB Rosa



30x60 (11^{13/16}"x23^{5/8}") ●82
639C7C Rosa



10x60 (3^{15/16}"x23^{5/8}") ●63
979C7F Rosa



10x10 (3^{15/16}"x3^{15/16}") ●10
109C7F Rosa



45x45 (17^{11/16}"x17^{11/16}") ●86
459C6PB Marron



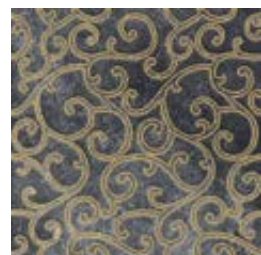
30x60 (11^{13/16}"x23^{5/8}") ●82
639C6C Marron



10x60 (3^{15/16}"x23^{5/8}") ●63
979C6F Marron



10x10 (3^{15/16}"x3^{15/16}") ●10
109C6F Marron



45x45 (17^{11/16}"x17^{11/16}") ●86
459C9PB Antracite



30x60 (11^{13/16}"x23^{5/8}") ●82
639C9C Antracite



10x60 (3^{15/16}"x23^{5/8}") ●63
979C9F Antracite

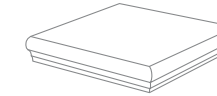


10x10 (3^{15/16}"x3^{15/16}") ●10
109C9F Antracite



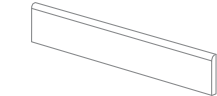
GRADONE NAT.
36x37,5x5,2
(14^{3/4}"x14^{3/4}"x2^{1/16}") ●63

- 55 **369C1/G** BEIGE
- 55 **369C7/G** ROSA
- 55 **369C6/G** MARRON
- 55 **369C9/G** ANTRACITE



GRADONE ANGOLARE NAT.
37,5x37,5x5,2
(14^{3/4}"x14^{3/4}"x2^{1/16}") ●71

- 71 **369C1/A** BEIGE
- 71 **369C7/A** ROSA
- 71 **369C6/A** MARRON
- 71 **369C9/A** ANTRACITE



BATTISCOPA NAT.
9x45
(3^{9/16}"x17^{11/16}") ●63

- 10 **849C1** BEIGE
- 10 **849C7** ROSA
- 10 **849C6** MARRON
- 10 **849C9** ANTRACITE

Imballi e pesi — Packing and weight/Emballages et poids/Verpackung und gewicht/Embalajes y pesos/□□□□□□□□ □□□□

Articolo Item Reference Artikel Artículo □□□□□□□□	Formato Size Format Format Tamaño □□□□□□ cm.	Spessore Thickness Epaisseur Stärke Espesor □□□□□□ mm.	Pz. xMq. Pieces xSqM Pcs xM ² Stk. xQm Pzs xMc. □□. x □□.□.	Pz. x Scat. Pieces x Box Pcs / Bte Stk. x Krt. Pzs x Caja □□. x □□□.	Mq. x Scat. SqM x Box M ² / Bte Qm x Krt. Mc. x Caja □□.□. □ □□□.	Peso x Scat. Weight x Box Poids / Bte(kg) Gewicht x Krt Peso x Caja(kg) □□□ □ □□□.	Scat. x Pal. Boxes x Pal. Bte / Pal. Krt. x Pal. Cajas x Pal. □□□. x □□□□.	Mq. x Pal. SqM x Pal. M ² / Pal. Qm x Pal. Mc. x Pal. □□.□ □ □□□□.	Peso x Pal. Weight x Pal. Poids / Pal. Gewicht x Pal. Peso x Pal. □□□ □ □□□□
459C_ /P	45x45	9,0	4,94	6	1,215	25,00	33	40,10	825
639C_	30x60	9,0	5,56	7	1,260	24,40	40	50,40	976
M309C_	30x30	9,0	11,11	5	0,450	10,30	-	-	-

SHADE VARIATION



V3 High



> 40%



放射性水平为A



COEFFICIENTE DI ATTRITO
Slip resistance
Coefficient de glissement
Rutschfestigkeit Barfußbereich
Coeficiente de atrito medio
□□□□□□□□□□ □□□□□□

DIN 51130
DIN 51097
ANSI A 137.1 - 2012
DCOF (Section 9.6)
DM 236/89
metodo B.C.R.A.

NATURALE
R9
-
DRY: 0,75* - WET: 0,57*
≥ 0,40

LAPPATO
-
-
-
-

* Values obtained with certificate n° 20130077. Date 03/23/2013.

EMIL
CERAMICA

STILE SENZA TEMPO

EMILCERAMICA S.p.A.
Via Ghiarola Nuova 29
41042 Fiorano Modenese (Mo) - Italy
Tel. 0536 835111
Italy fax: +39 0536 835958
Export fax: +39 0536 835460
www.emilceramica.it