

SILVERSTONE

Dry - Pressed Ceramic Tiles ISO 13006 : 2012 Annex G - UNI EN 14411 : 2012 Annex G - Bla GL



CARATTERISTICHE TECNICHE Technical Features - Caracteristiques Techniques Technische Eigenschaften - Caracteristicas Tecnicas - Технические Характеристики	NORMA Standard - Norme Norm - Norma - Норма	VALORI Value - Valeur Vorgabe - Valor - Средние
	UNI EN ISO 10545/2	± 0,26% / ± 1,5mm
PLANARITÀ Flatness - Planéité - Ebenflächigkeit - Planiyud - Плоскостность	ASTM C485 Warpage Calibrated ± 0,75% (max ± 0,09 in) Rectified ± 0,40% (max ± 0,05 in-size ≤ 60cm) (max ± 0,07 in-size > 60cm)	- ± 0,25% (max ± 0,05 in-size ≤ 60cm) (max ± 0,07 in-size > 60cm)
ASSORBIMENTO D'ACQUA - Valore medio in % Water absorption - Average value expressed in % Absorption d'eau - Valeur moyenne en % Wasseraufnahme - Durchschnittswert in % Absorción de agua - Valor medio en % - Поглощение воды	UNI EN ISO 10545/3 ≤ 0,5 % ASTM C373	Conforme Compliant
RESISTENZA ALLA FLESSIONE Modulus of rupture - Resistance a la flexion Biegefestigkeit - Resistencia a la flexion - Прочность на изгиб	UNI EN ISO 10545/4	≥ 50 N/mm²
FORZA DI ROTTURA Breaking strength - Résistance à la rupture Bruchlast - Resistencia a la rotura - Разрывное усилие	UNI EN ISO 10545/4 ASTM C648	≥ 2000 N 700 LBS
RESISTENZA AL GELO Frost resistance - Résistance au gel - Frostbeständigkeit Resistencia a las heladas - Морозостойкость	UNI EN ISO 10545/12 ASTM C1026	Conforme Unaffected
RESISTENZA CHIMICA ad alte e basse concentrazioni di acidi e basi Chemical resistance to high and low acid and basic concentrations Résistance chimique aux hautes et basses concentrations d'acides et de bases Chemikalienfestigkeit bei hohen und niedrigen Konzentrationen von Säuren und Basen Resistencia química con concentraciones altas y bajas de ácidos y bases Химическая стойкость к высоким и низким концентрациям кислот и щелочей	UNI EN ISO 10545/13 ASTM C-650	GA - GLA - GHA Unaffected
RESISTENZA ALLE MACCHIE Stain resistance - Résistance aux taches - Fleckenbeständigkeit Resistencia a las manchas - Стойкость к образованию пятен	UNI EN ISO 10545/14 CTI 81-7D	5 No Evident Variation
COEFFICIENTE DI ATTRITO Slip resistance - Coefficient de glissement - Rutschfestigkeit Barfußbereich Coeficiente de atrito medio - Коэффициент трения	DIN 51130 DIN 51097 ANSI A 137.1- 2012 DCOF (Section 9.6) B.C.R.A.	NATURALE R10 A Dry: 0,71* Wet: 0,64* ≥ 0,40 LAPPATO R9 - Dry: 0,73* Wet: 0,46* -

* Values obtained with certificate n° 20120007. Date 03/23/2013.

Per maggiori chiarimenti sui dati tecnici e sulla garanzia consultare il catalogo generale in vigore. - For further information on technical specifications, please consult our up-dated general catalogue. - Pour toutes informations supplémentaires sur les données techniques et sur les garanties, veuillez consulter le catalogue general en vigueur. - Für weitere Informationen über technische Daten und Garantie beziehen sie sich bitte auf den aktuellen Gesamtkatalog. - Para ultteriores informaciones sobre los datos técnicos y la garantía, vease el catalogo general en vigor. - Более подробную информацию о технических данных и гарантии смотрите в действующем сводном катал.

Articolo Item Reference Artikel Articulo Артикула	Formato (cm) Size (cm) Format (cm) Format (cm) Tamaño (cm) Формат (cm)	Spessore (mm) Thickness (mm) Epaisseur (mm) Stärke (mm) Espesor (mm) Толщина (mm)	Pz. x Mq. Pieces x Sqm Pcs / M² Stk. x Qm Pzs x Mc. Шт. x Кв.М.	Pz. x Scat. Pieces x Box Pcs / Bte Stk. x Krt. Pzs x Caja Шт. x Кор.	Mq. x Scat. Sqm x Box M² / Bte Qm x Krt. Mc. x Caja Кв.М. x Кор.	Peso x Scat. (Kg) Weight x Box (Kg) Poids / Bte (Kg) Krt. x Pal. Gewicht x Pal. (Kg) Peso x Caja (Kg) Вес x Кор. (Kg)	Scat. x Pal. Boxes x Pal. Bte / Pal. Krt. x Pal. Cajas x Pal. Кор. x Подд.	Mq. x Pal. Sqm x Pal. M² / Pal. Qm x Pal. Mc. x Pal. Кв.М x Подд.	Peso x Pal. (Kg) Weight x Pal. (Kg) Poids / Pal. (Kg) Gewicht x Pal. (Kg) Peso x Pal. (Kg) Вес x Подд (Kg)
604L1_R/P	60x60	10	2,78	3	1,080	24,70	40	43,20	988
634L_R/P	30x60	10	5,56	6	1,080	24,70	40	43,20	988
454L_	45x45	9	4,94	6	1,215	27,00	33	40,10	891
M634L_	30x60	10	5,56	4	0,720	16,00	30	21,60	480
I304L_	30x30	10	11,11	5	0,450	10,30	60	27,00	618

Emilceramica S.p.A.



EMIL
CERAMICA

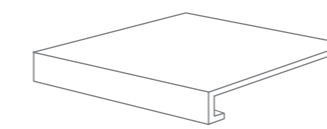
EMILCERAMICA S.p.A.
Via Ghiarola Nuova 29
41042 Fiorano Modenese (Mo) - Italia
Tel. 0536 835111
Fax Italia: +39 0536 835958
Fax Export: +39 0536 835490
info@emilceramicagroup.it
www.emilceramica.it

1034774 Rev. 0 - Giugno 2014

SILVERSTONE

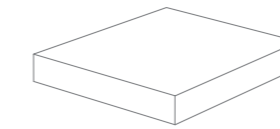
EMIL
CERAMICA





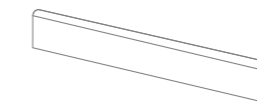
GRADONE - STEP
 30x30x3,2x3,2 - 11^{13/16}"x11^{13/16}"x1^{1/4}"x1^{1/4}"
 Pcs. Box. 6 - ML x Box 1,80

- 7C4L1R** Bianco Nat. Rett. ● 60
- 7C4L3R** Beige Nat. Rett. ● 60
- 7C4L6R** Marrone Nat. Rett. ● 60
- 7C4L8R** Grigio Nat. Rett. ● 60
- 7C4L9R** Antracite Nat. Rett. ● 60



ANGOLARE DX/SX
CORNER TILE DX/SX
 30x30x3,2x3,2 - 11^{13/16}"x11^{13/16}"x1^{1/4}"x1^{1/4}"
 Pcs. Box. 2 - ML x Box 0,60

- 2A4L1RD/S** Bianco Nat. Rett. ● 781
- 2A4L3RD/S** Beige Nat. Rett. ● 781
- 2A4L6RD/S** Marrone Nat. Rett. ● 781
- 2A4L8RD/S** Grigio Nat. Rett. ● 781
- 2A4L9RD/S** Antracite Nat. Rett. ● 781



BATTISCOPIA - SKIRTING
 7,5x60 - 2^{15/16}"x23^{5/8}"
 Pcs. Box. 15 - ML x Box 9

- 874L1R** Bianco Nat. Rett. ● 13
- 874L3R** Beige Nat. Rett. ● 13
- 874L6R** Marrone Nat. Rett. ● 13
- 874L8R** Grigio Nat. Rett. ● 13
- 874L9R** Antracite Nat. Rett. ● 13

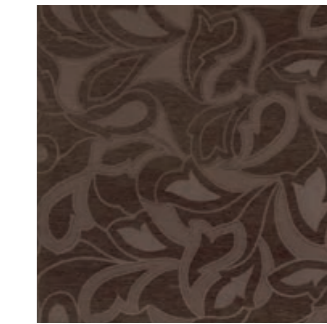
ATMOSPHERE



60x60 - 23^{5/8}"x23^{5/8}"
604L1RC Bianco Nat. Rett. ● 95
 Pcs. Box. 2



60x60 - 23^{5/8}"x23^{5/8}"
604L3RC Beige Nat. Rett. ● 95
 Pcs. Box. 2



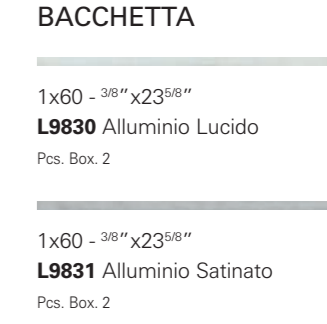
60x60 - 23^{5/8}"x23^{5/8}"
604L6RC Marrone Nat. Rett. ● 95
 Pcs. Box. 2



60x60 - 23^{5/8}"x23^{5/8}"
604L8RC Grigio Nat. Rett. ● 95
 Pcs. Box. 2

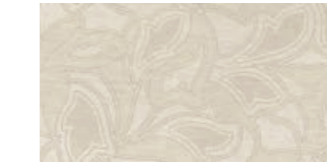


60x60 - 23^{5/8}"x23^{5/8}"
604L9RC Antracite Nat. Rett. ● 95
 Pcs. Box. 2



60x60 - 23^{5/8}"x23^{5/8}"
604L6PC Marrone Lapp. Rett. ● 95
 Pcs. Box. 2

ATMOSPHERE



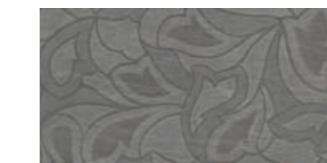
30x60 - 11^{13/16}"x23^{5/8}"
634L1PC Bianco Lapp. Rett. ● 85
 Pcs. Box. 2



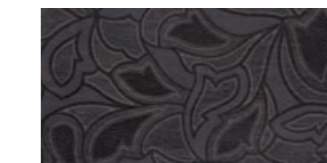
30x60 - 11^{13/16}"x23^{5/8}"
634L3PC Beige Lapp. Rett. ● 85
 Pcs. Box. 2



30x60 - 11^{13/16}"x23^{5/8}"
634L6PC Marrone Lapp. Rett. ● 85
 Pcs. Box. 2



30x60 - 11^{13/16}"x23^{5/8}"
634L8PC Grigio Lapp. Rett. ● 85
 Pcs. Box. 2



30x60 - 11^{13/16}"x23^{5/8}"
634L9PC Antracite Lapp. Rett. ● 85
 Pcs. Box. 2

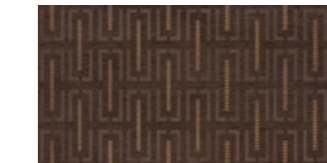
EMOTION



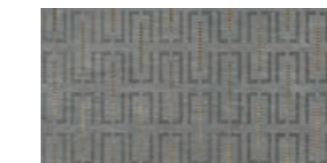
30x60 - 11^{13/16}"x23^{5/8}"
634L1PN Bianco Lapp. Rett. ● 85
 Pcs. Box. 2



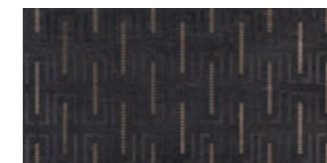
30x60 - 11^{13/16}"x23^{5/8}"
634L3PN Beige Lapp. Rett. ● 85
 Pcs. Box. 2



30x60 - 11^{13/16}"x23^{5/8}"
634L6PN Marrone Lapp. Rett. ● 85
 Pcs. Box. 2



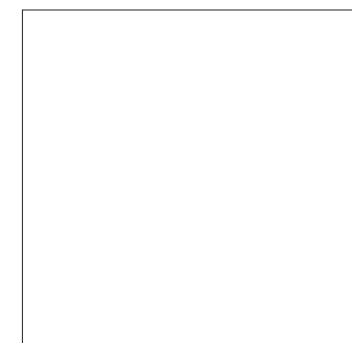
30x60 - 11^{13/16}"x23^{5/8}"
634L8PN Grigio Lapp. Rett. ● 85
 Pcs. Box. 2



30x60 - 11^{13/16}"x23^{5/8}"
634L9PN Antracite Lapp. Rett. ● 85
 Pcs. Box. 2

COLORI/FORMATI

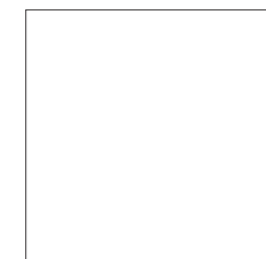
COLOURS / SIZES - COULEURS / FORMATS - FARBEN / FORMATE - COLORES / TAMAÑOS - ЦВЕТА / ФОРМАТЫ



60x60 - 23^{5/8}"x23^{5/8}"
604L1R Bianco Naturale Rett. ● 662
604L3R Beige Naturale Rett. ● 662
604L1R Marrone Naturale Rett. ● 662
604L1R Grigio Naturale Rett. ● 662
604L1R Antracite Naturale Rett. ● 662



30x60 - 11^{13/16}"x23^{5/8}"
634L1R Bianco Naturale Rett. ● 61
634L3R Beige Naturale Rett. ● 61
634L1R Marrone Naturale Rett. ● 61
634L1R Grigio Naturale Rett. ● 61
634L1R Antracite Naturale Rett. ● 61



45x45 - 17^{11/16}"x17^{11/16}"
454L1 Bianco Naturale ● 54
454L3 Beige Naturale ● 54
454L1 Marrone Naturale Rett. ● 54
454L1 Grigio Naturale Rett. ● 54
454L1 Antracite Naturale Rett. ● 54

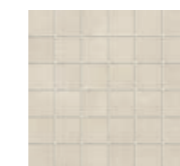
604L1P Bianco Lappato Rett. ● 77
604L3P Beige Lappato Rett. ● 77
604L1P Marrone Lappato Rett. ● 77
604L1P Grigio Lappato Rett. ● 77
604L1P Antracite Lappato Rett. ● 77

634L1P Bianco Lappato Rett. ● 73
634L3P Beige Lappato Rett. ● 73
634L1P Marrone Lappato Rett. ● 73
634L1P Grigio Lappato Rett. ● 73
634L1P Antracite Lappato Rett. ● 73

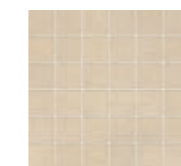
Si consiglia la posa con fuga 2 mm. - Laying with a 2 mm-joint is recommended. - Pose recommandée avec joints de 2 mm.
 Es wird eine Fugenbreite von 2 mm empfohlen. - Se recomienda la colocación con juntas de 2 mm. - Рекомендується укладка с швом 2 мм.

MOSAICO TOZZ. MIX NAT./LAPP.*

Tessera - Chip 4,8x4,8 - 1^{7/8}"x 1^{7/8}"



30x30 - 11^{13/16}"x11^{13/16}"
I304L1 Bianco Rett. ● 98



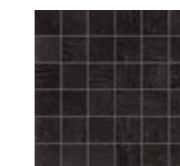
30x30 - 11^{13/16}"x11^{13/16}"
I304L3 Beige Rett. ● 98



30x30 - 11^{13/16}"x11^{13/16}"
I304L6 Marrone Rett. ● 98



30x30 - 11^{13/16}"x11^{13/16}"
I304L8 Grigio Rett. ● 98



30x30 - 11^{13/16}"x11^{13/16}"
I304L9 Antracite Rett. ● 98

LISTELLI SFALSATI MIX NAT./LAPP.*



30x60 - 11^{13/16}"x23^{5/8}"
M634L1 Bianco Rett. ● 95



30x60 - 11^{13/16}"x23^{5/8}"
M634L3 Beige Rett. ● 95



30x60 - 11^{13/16}"x23^{5/8}"
M634L6 Marrone Rett. ● 95



30x60 - 11^{13/16}"x23^{5/8}"
M634L8 Grigio Rett. ● 95



30x60 - 11^{13/16}"x23^{5/8}"
M634L9 Antracite Rett. ● 95

* Su rete in fibra - On fibre mesh backing
 Sur filet en fibre de verre - Auf Glasfasernetz
 Sobre malla de fibra - На волоконной сетке