

# IMAGO



Pocket . Binder .



Una prestigiosa collezione dalle forti tonalità marmoree e dalle caratteristiche anticature della superficie nobilitata dal Grès Porcellanato.  
 Un prodotto che potrebbe essere definito "new classic" per l'innovativa interpretazione stilistica della materia che fonde la naturalezza delle pietre calcaree alla luminosità del metallo e alla preziosità della madreperla.

A prestigious collection with strong marble shades and peculiar aged surface, made even more precious by Porcelain Stoneware.  
 A product that could be defined "new classic" thanks to its mould-breaking stylistic forging of the matter, merging the truthfulness of calcareous stones with metal brightness and pearl refinement.

Une prestigieuse collection caractérisée par les fortes tonalités du marbre et par une surface vieillie particulière, ennoblie par le Grès Cérame.  
 Un produit qui pourrait être défini "new classic", grâce à l'interprétation stylistique innovante de la matière qui fond le naturel des pierres calcaires, la luminosité du métal et la richesse du nacre.

Eine eindrucksvolle Kollektion, die durch die strengen Akzente des Marmors und die charakteristische Alterung der edlen Oberfläche des Feinsteinzeugs geprägt wird.  
 Es handelt sich um ein Produkt, das durch die innovative stilistische Interpretation der Materie, die die Natürlichkeit des Kalksteins, die Helle des Metalls und die Kostbarkeit des Perlmutts zum Ausdruck bringt, als "New Age" bezeichnet werden kann.

Эта престижная коллекция выполнена из мраморовидного Керамогранита решительных оттенков, имеющего характерную состаренную поверхность.  
 Продукт, который можно было бы определить как «new classic» за новаторскую стилистическую интерпретацию материала, который сочетает в себе натуральность известнякового камня, блеск металла и изысканность перламутра.



*imago*

la fabbrica  
Civilization of Beauty





*imago*



44,2x44,2 SPADIX lap ret



44,2x44,2 GLAUCUS lap ret . 3,5x44,2 set treccia GLAUCUS lap ret 3,5x3,5 angolo treccia GLAUCUS lap ret

la fabbrica  
CREMILINA  
Civilization of Beauty



44,2x44,2 MUS lap ret



*imago*



44,2x44,2 MUS lap ret . 44,2x44,2 FRILL MUS lap ret . 8,2x44,2 FRILL MUS lap ret .

la fabbrica  
CREAMLINE  
Civilization of Beauty

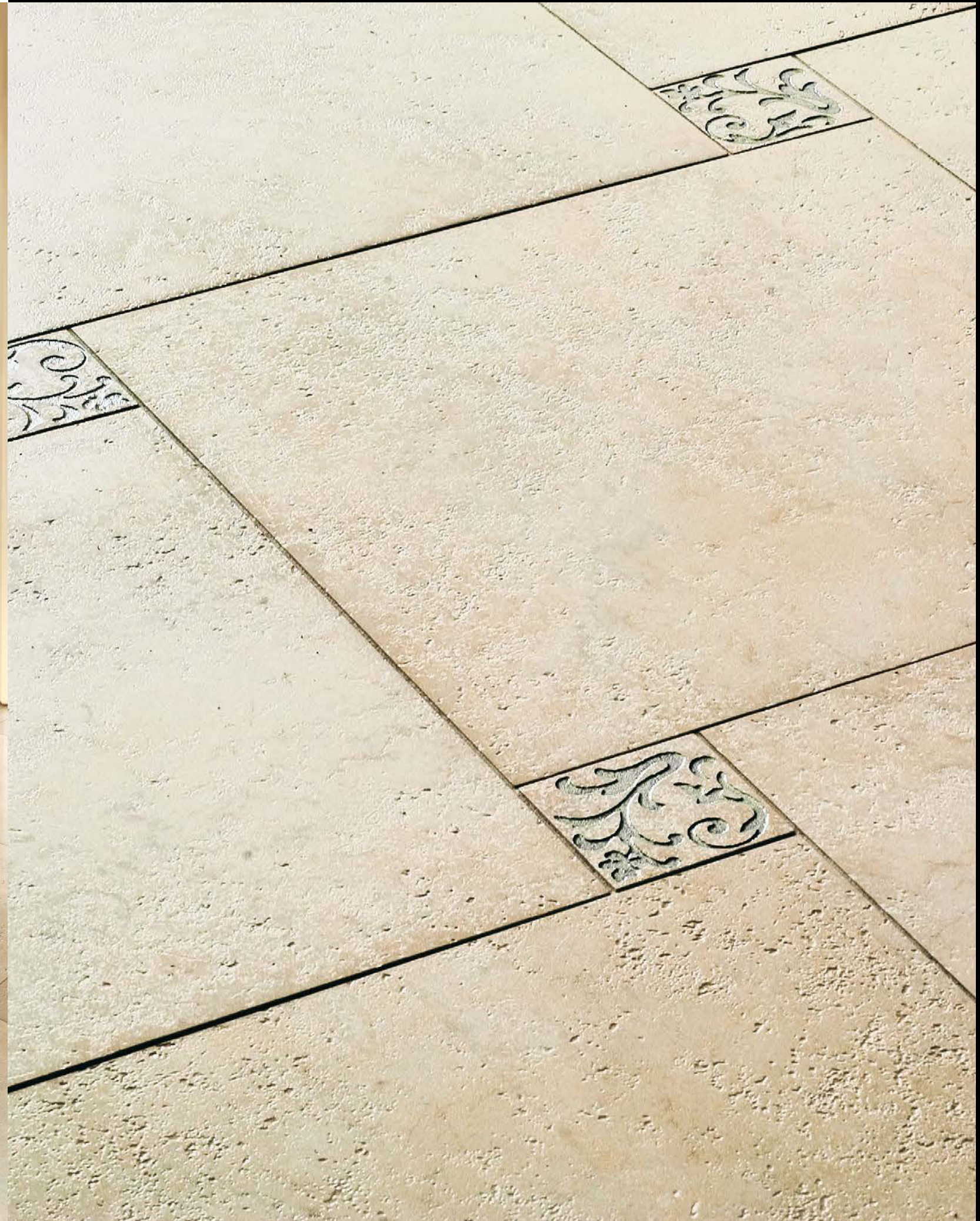
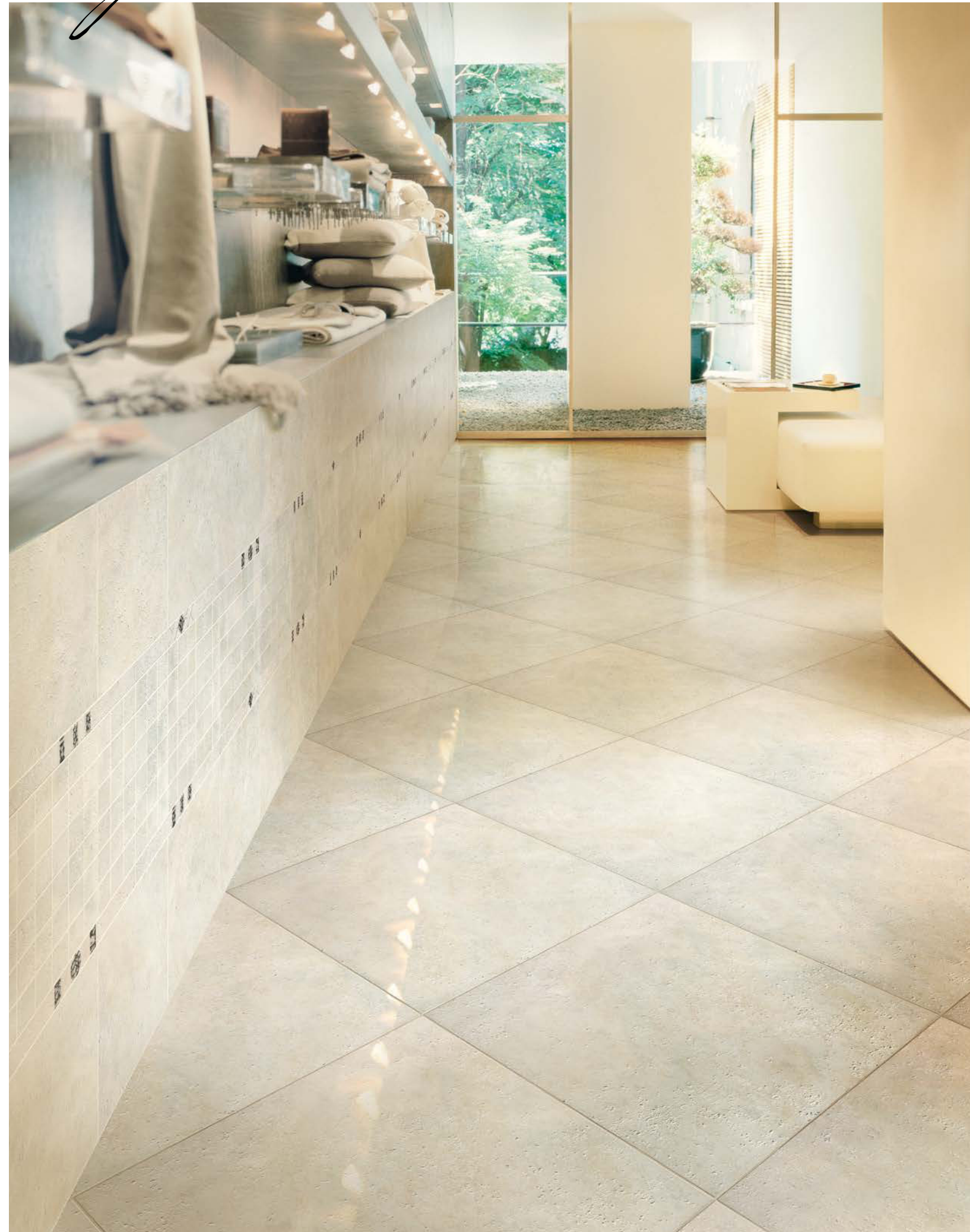


44,2x44,2 MUS lap ret . 4,5x44,2 treccia MUS lap ret



*imago*

la fabbrica  
Civilization of Beauty



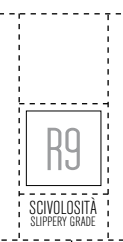
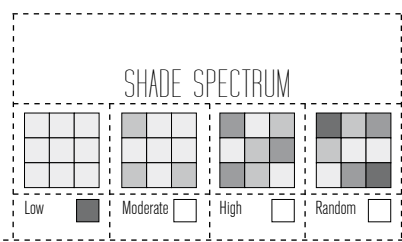
44,2x44,2 EBUR lap ret . 22x22 EBUR lap ret . 30x30 mosaico EBUR lap ret . 3,5x44,2 set treccia EBUR lap ret 3,5x3,5 angolo treccia EBUR lap ret

44,2x44,2 EBUR lap ret . 8,2x8,2 FRILL EBUR lap ret



# IMAGO

44,2x44,2 - 22x22 : SPESSORE - THICKNESS - ÉPAISSEUR - STÄRKE - ESPESOR - ΠΑΧΟΣ - ТОЛЩИНА **12 mm**



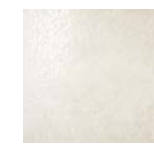
* FORMATO cm.		CODICE		PZ. X SCAT		MQ. X SCAT		KG X SCAT		SCAT. X PAL		EUROPALLET 80x120 cm	
Size	Tile	Code	Code	Pieces x Box	Sqm x Box	Weight x Box	Weight x Box	Boxes x Pal.	Sqm x Pal.	Weight x Pal.	Weight x Pal.	Cm. h. Pal.	
44,2x44,2	Tile	-	-	5	0,98	25	52	52	50,96	1320	104	-	
44,2x44,2	Frill	-	-	1	-	5	-	-	-	-	-	-	
22x22	-	-	-	20	0,97	25	60	60	58,2	1520	82	-	
8x44,2	Fascia Frill	-	-	4	-	4,5	-	-	-	-	-	-	
8,2x8,2	Ang. Fascia Frill	-	-	4	-	0,7	-	-	-	-	-	-	



## CEREUS



**B170 4L01.** CEREUS 44,2x44,2 . 17 3/8"x17 3/8" Lap. Ret. ○



**B200 2L01.** CEREUS 22x22 . 8 11/16"x8 11/16" Lap. Ret. ○



**B270 9I21.** CEREUS 5x5 SU RETE 30x30 . 12"x12" Lap. Ret. ○



**R40 R178.** Set 3 pcs. Treccia CEREUS 3,5x44,2 . 1 3/8"x17 3/8" Lap. Ret. ○ **V150 R472.** Ang. Treccia IMAGO 3,5x3,5 . 1 3/8"x1 3/8"



**V397 L509.** FRILL CEREUS 44,2x44,2 . 17 3/8"x17 3/8" Lap. Ret. ○



**V310 L510.** FASCIA FRILL CEREUS 8,2x44,2 . 3 3/8"x17 3/8" Lap. Ret. ○



**V215 L511.** ANG. FASCIA FRILL CEREUS 8,2x8,2 . 3 3/16"x3 3/16" Lap. Ret. ○



**V90 B101.** Battiscopa CEREUS 8,5x44,2 . 3 3/8"x17 3/8"

## GLAUCUS



**B170 4L03.** GLAUCUS 44,2x44,2 . 17 3/8"x17 3/8" Lap. Ret. ○



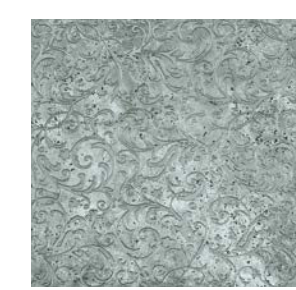
**B200 2L03.** GLAUCUS 22x22 . 8 11/16"x8 11/16" Lap. Ret. ○



**B270 9I23.** GLAUCUS 5x5 SU RETE 30x30 . 12"x12" Lap. Ret. ○



**R40 R180.** Set 3 pcs. Treccia GLAUCUS 3,5x44,2 . 1 3/8"x17 3/8" Lap. Ret. ○ **V150 R472.** Ang. Treccia IMAGO 3,5x3,5 . 1 3/8"x1 3/8"



**V397 L512.** FRILL GLAUCUS 44,2x44,2 . 17 3/8"x17 3/8" Lap. Ret. ○



**V310 L643.** FASCIA FRILL GLAUCUS 8,2x44,2 . 3 3/8"x17 3/8" Lap. Ret. ○



**V215 L644.** ANG. FASCIA FRILL GLAUCUS 8,2x8,2 . 3 3/16"x3 3/16" Lap. Ret. ○



**V90 B103.** Battiscopa GLAUCUS 8,5x44,2 . 3 3/8"x17 3/8"

## MUS



**B170 4L04.** MUS 44,2x44,2 . 17 3/8"x17 3/8" Lap. Ret. ○



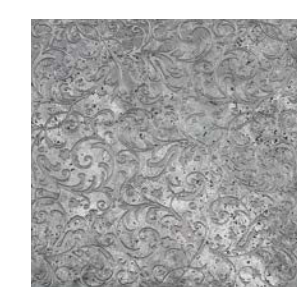
**B200 2L04.** MUS 22x22 . 8 11/16"x8 11/16" Lap. Ret. ○



**B270 9I24.** MUS 5x5 SU RETE 30x30 . 12"x12" Lap. Ret. ○



**R40 R181.** Set 3 pcs. Treccia MUS 3,5x44,2 . 1 3/8"x17 3/8" Lap. Ret. ○ **V150 R472.** Ang. Treccia IMAGO 3,5x3,5 . 1 3/8"x1 3/8"



**V397 L414.** FRILL MUS 44,2x44,2 . 17 3/8"x17 3/8" Lap. Ret. ○



**V310 L417.** FASCIA FRILL MUS 8,2x44,2 . 3 3/8"x17 3/8" Lap. Ret. ○



**V215 L420.** ANG. FASCIA FRILL MUS 8,2x8,2 . 3 3/16"x3 3/16" Lap. Ret. ○

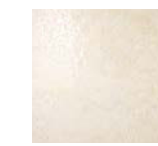


**V90 B104.** Battiscopa MUS 8,5x44,2 . 3 3/8"x17 3/8"

## EBUR



**B170 4L02.** EBUR 44,2x44,2 . 17 3/8"x17 3/8" Lap. Ret. ○



**B200 2L02.** EBUR 22x22 . 8 11/16"x8 11/16" Lap. Ret. ○



**B270 9I22.** EBUR 5x5 SU RETE 30x30 . 12"x12" Lap. Ret. ○



**R40 R179.** Set 3 pcs. Treccia EBUR 3,5x44,2 . 1 3/8"x17 3/8" Lap. Ret. ○ **V150 R472.** Ang. Treccia IMAGO 3,5x3,5 . 1 3/8"x1 3/8"



**V397 L413.** FRILL EBUR 44,2x44,2 . 17 3/8"x17 3/8" Lap. Ret. ○



**V310 L416.** FASCIA FRILL EBUR 8,2x44,2 . 3 3/8"x17 3/8" Lap. Ret. ○



**V215 L419.** ANG. FASCIA FRILL EBUR 8,2x8,2 . 3 3/16"x3 3/16" Lap. Ret. ○

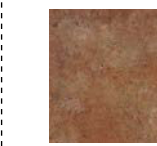


**V90 B102.** Battiscopa EBUR 8,5x44,2 . 3 3/8"x17 3/8"

## SPADIX



**B170 4L05.** SPADIX 44,2x44,2 . 17 3/8"x17 3/8" Lap. Ret. ○



**B200 2L05.** SPADIX 22x22 . 8 11/16"x8 11/16" Lap. Ret. ○



**B270 9I31.** SPADIX 5x5 SU RETE 30x30 . 12"x12" Lap. Ret. ○



**R40 R190.** Set 3 pcs. Treccia SPADIX 3,5x44,2 . 1 3/8"x17 3/8" Lap. Ret. ○ **V150 R472.** Ang. Treccia IMAGO 3,5x3,5 . 1 3/8"x1 3/8"



**V397 L415.** FRILL SPADIX 44,2x44,2 . 17 3/8"x17 3/8" Lap. Ret. ○



**V310 L418.** FASCIA FRILL SPADIX 8,2x44,2 . 3 3/8"x17 3/8" Lap. Ret. ○



**V215 L421.** ANG. FASCIA FRILL SPADIX 8,2x8,2 . 3 3/16"x3 3/16" Lap. Ret. ○



**V90 B105.** Battiscopa SPADIX 8,5x44,2 . 3 3/8"x17 3/8"



GRES PORCELLANATO A TUTTA MASSA. FULL BODY PORCELAIN TILES. GRES CERAME DI LINE MASSE. FEINSTEINIGES VOLLE MASSE. GRES PORCELÁNICO CON COLORACIÓN EN MASA. ГОМОГЕННЫЙ КЕРАМОГРАНИТ. СЛАБИТО Е РЕПТИКАТО. HONED AND RECTIFIED. SEMI-POLEI RECTIFIE. TEI POLIERT UND KANIBRIERT. LAPEADO Y RECTIFICADO. ТИПОВИМОДО КИ ПЕЛАНЕНО. ПОДГОТОВЛЕНОВАННАС И РЕКТИФИЦИРОВАННАС.