





45x45

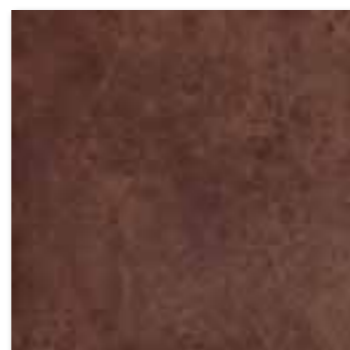
R9

V2

R



DAK44650
PEI 4 ○ 74 / m²
mat | matt



DAK44651
PEI 4 ○ 74 / m²
mat | matt



DAK44648
PEI 5 ○ 74 / m²
mat | matt



DAK44649
PEI 5 ○ 74 / m²
mat | matt



DAK44647
PEI 5 ○ 74 / m²
mat | matt



DDPPP650
PEI 4 ○ 68 / set
mat | matt

[SET]



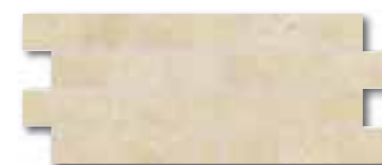
DDPPP651
PEI 4 ○ 68 / set
mat | matt

[SET]



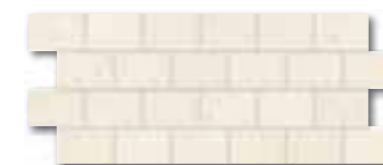
DDPPP648
PEI 5 ○ 68 / set
mat | matt

[SET]



DDPPP649
PEI 5 ○ 68 / set
mat | matt

[SET]



DDPPP647
PEI 5 ○ 68 / set
mat | matt

[SET]

45x20

>

R9

A

V2

R



DSAPM650
○ 56 / ks
mat | matt
cihlová / brick / ceglata
кирпичный / téгла



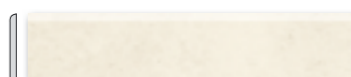
DSAPM651
○ 56 / ks
mat | matt
hnědá / brown / brazowa
коричневый / barna



DSAPM648
○ 56 / ks
mat | matt
šedá / grey / szara / серый / szürke



DSAPM649
○ 56 / ks
mat | matt
béžová / beige / beżowa / бежевый / bézs



DSAPM647
○ 56 / ks
mat | matt
slonová kost / ivory / kość słoniowa
слоновая кость / elefántcsont

45x8,5

R

výrobek / product



EN



diářdice / floor tile	45x45	445x445x10	EN 14411:2012, annex G B1a GL	6	5	1,21	26	31,46	25,0	20,7	677
Dekor 45x20 cm / decor 45x20 cm	7,5x5	72x47x10	STO ě. 030 - 045003	6	11	0,55	-	-	11,5	20,7	-
sokl / skirting plinth	45x8,5	445x85x10	STO ě. 030 - 044192	20	26,1	0,77	-	-	15,9	20,7	-