



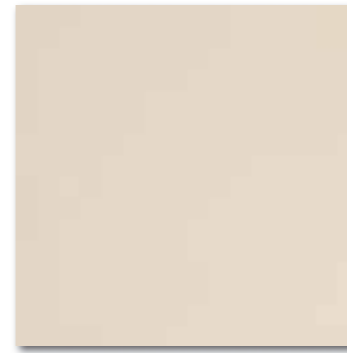
DAK44182  
PEI 5 ○ 86 / m<sup>2</sup>  
mat/lesk | matt/glossy



DAK44185  
PEI 5 ○ 86 / m<sup>2</sup>  
mat/lesk | matt/glossy



DAK44187  
PEI 4 ○ 86 / m<sup>2</sup>  
mat/lesk | matt/glossy



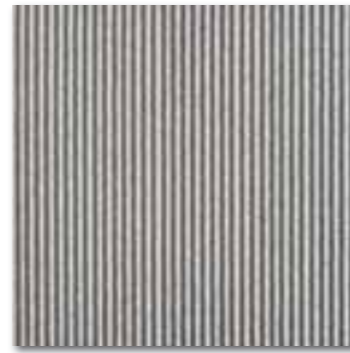
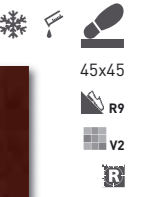
DAK44183  
PEI 5 ○ 86 / m<sup>2</sup>  
mat/lesk | matt/glossy



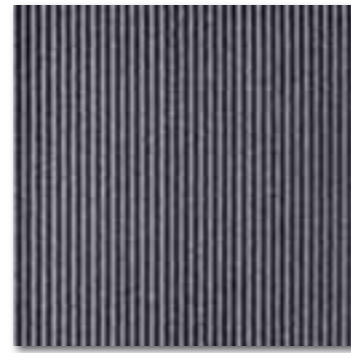
DAK44184  
PEI 5 ○ 86 / m<sup>2</sup>  
mat/lesk | matt/glossy



DAK44186  
PEI 4 ○ 86 / m<sup>2</sup>  
mat/lesk | matt/glossy



DDT44185  
PEI 5 ○ 92 / ks  
mat/lesk | matt/glossy



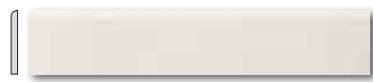
DDT44187  
PEI 5 ○ 92 / ks  
mat/lesk | matt/glossy



DDT44184  
PEI 5 ○ 92 / ks  
mat/lesk | matt/glossy



DDT44186  
PEI 5 ○ 92 / ks  
mat/lesk | matt/glossy



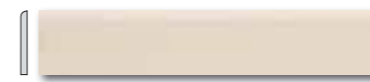
DSAPM182  
○ 56 / ks  
mat/lesk | matt/glossy  
bilá / white / biata / белый / fehér



DSAPM185  
○ 56 / ks  
mat/lesk | matt/glossy  
šedá / grey / szara / серый / szürke



DSAPM187  
○ 56 / ks  
mat/lesk | matt/glossy  
černá / black / czarna / черный / fekete



DSAPM183  
○ 56 / ks  
mat/lesk | matt/glossy  
světle béžová / light beige / jasnobežowa  
světlo-bežový / világosbézs



DSAPM184  
○ 56 / ks  
mat/lesk | matt/glossy  
béžová / beige / bežowa / бежевый / bézs



DSAPM186  
○ 56 / ks  
mat/lesk | matt/glossy  
hnědá / brown / brązowa  
коричневый / barna



výrobek / product	cm	mm	EN	ks/m <sup>2</sup>	m <sup>2</sup>	kg	kg/m <sup>2</sup>	brutto kg
dlaždice / floor tile	45x45	445x445x10	EN 14411:2012, annex G Bla GL	6	5	1,21	26	31,46
rozeta / rosette	45x45	445x445x10	EN 14411:2012, annex G Bla GL	4	5	0,81	-	16,8
sokl / skirting plinth	45x8,5	445x85x10	STO č. 030 - 044192	20	26,1	0,77	-	15,9

