

99VOLTE

“ A DIFFERENT VIEW ”

VIVA MADE





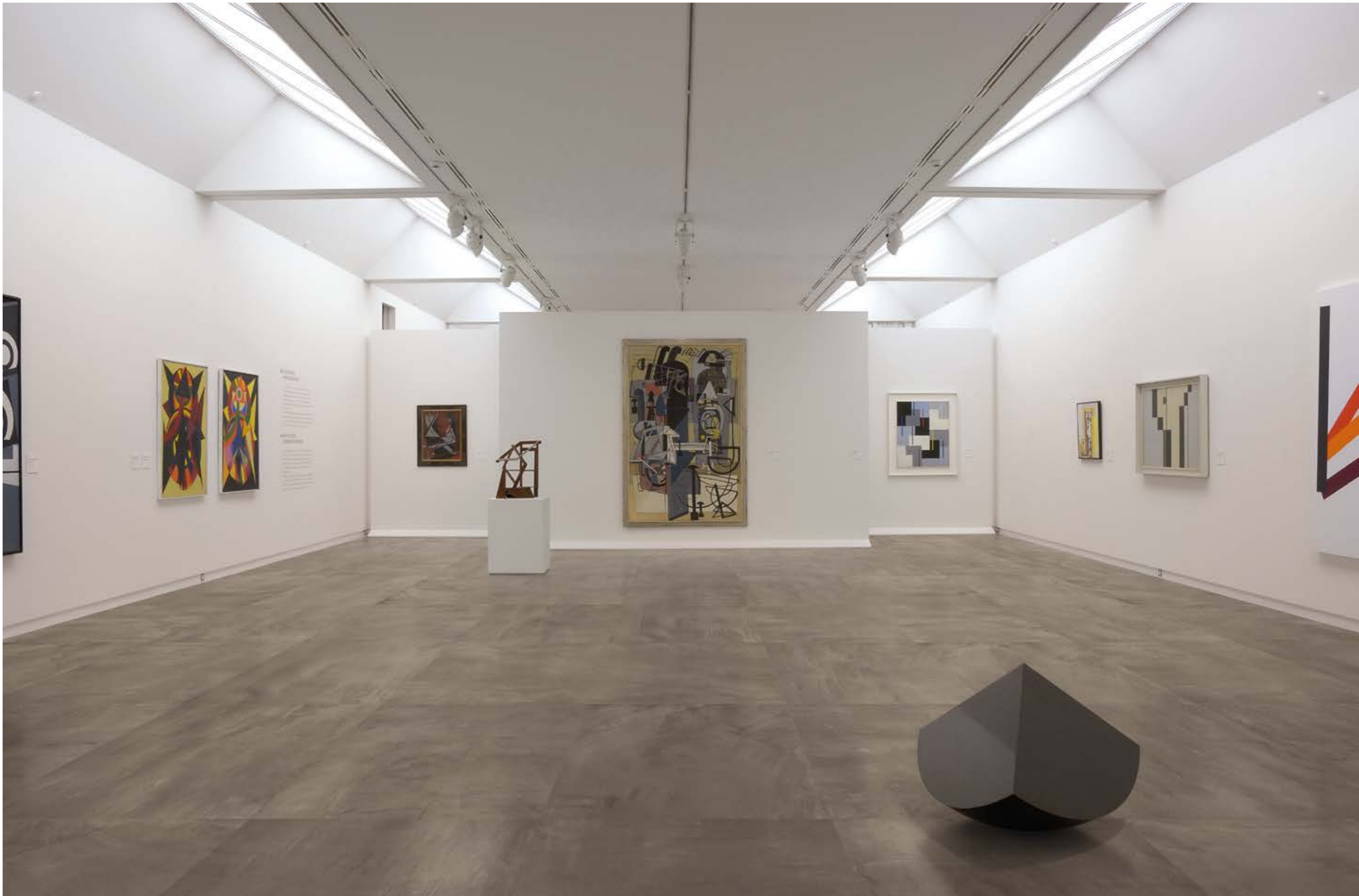
99VOLTE

f a n g o



o p a c o





809U4R
FANGO OPACO NAT. RETT.
80x80 - 31^{1/2}"x31^{1/2}"



809U4R
FANGO OPACO NAT. RETT.
80x80 - 31^{1/2}"x31^{1/2}"



809U4R
FANGO OPACO NAT. RETT.
80x80 - 31¹/₂"x31¹/₂"

489U4R
FANGO OPACO NAT. RETT.
40x80 - 15³/₄"x31¹/₂"

489U4RH
ASIA DECORATO
FANGO OPACO NAT. RETT.
40x80 - 15³/₄"x31¹/₂"

489U4RT
ASIA RIPOSO
FANGO OPACO NAT. RETT.
40x80 - 15³/₄"x31¹/₂"

c e n e r e



o p a c o





609U2R
CENERE OPACO NAT. RETT.
60x60 - 23⁵/₈"x23⁵/₈"



979U2R
CENERE OPACO NAT. RETT.
15x60 - 5^{7/8}"x23^{5/8}"

119U2R
CENERE OPACO NAT. RETT.
10x60 - 3^{15/16}"x23^{5/8}"



609U2R
CENERE OPACO NAT. RETT.
60x60 - 23⁵/₈"x23⁵/₈"

t e r r a



o p a c o





809U6R
TERRA OPACO NAT. RETT.
80x80 - 31¹/₂"x31¹/₂"

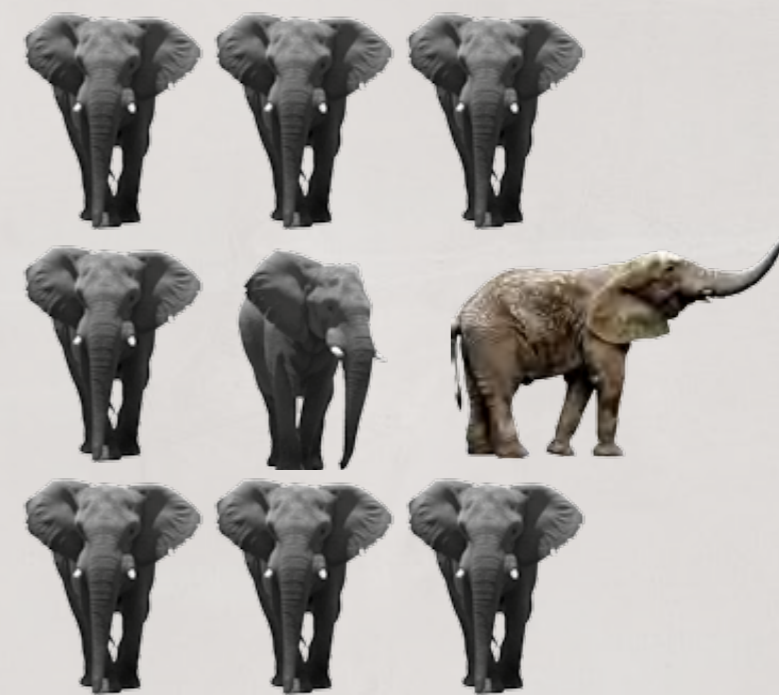


609U6R
TERRA OPACO NAT. RETT.
60x60 - 23⁵/₈"x23⁵/₈"

g r i g i o



o p a c o





809U8R
GRIGIO OPACO NAT. RETT.
80x80 - 31^{1/2}"x31^{1/2}"



309U8R
GRIGIO OPACO NAT. RETT.
30x30 - 11^{13/16}"x11^{13/16}"

119U8R
GRIGIO OPACO NAT. RETT.
10x60 - 3^{15/16}"x23^{5/8}"



609U8R
GRIGIO OPACO NAT. RETT.
60x60 - 23⁵/₈"x23⁵/₈"

979U8R
GRIGIO OPACO NAT. RETT.
15x60 - 5⁷/₈"x23⁵/₈"

979U8RE
99 SEGNI GRIGIO OPACO NAT. RETT.
15x60 - 5⁷/₈"x23⁵/₈"

Z309U0
MOSAICO BIANCO OPACO NAT.
30x30 - 11¹³/₁₆"x11¹³/₁₆"

c r e m a



o p a c o





309U1R
CREMA OPACO NAT. RETT.
30x30 - 11^{13/16}"x11^{13/16}"

309U1RC DECORO POLVERE
CREMA OPACO NAT. RETT.
30x30 - 11^{13/16}"x11^{13/16}"



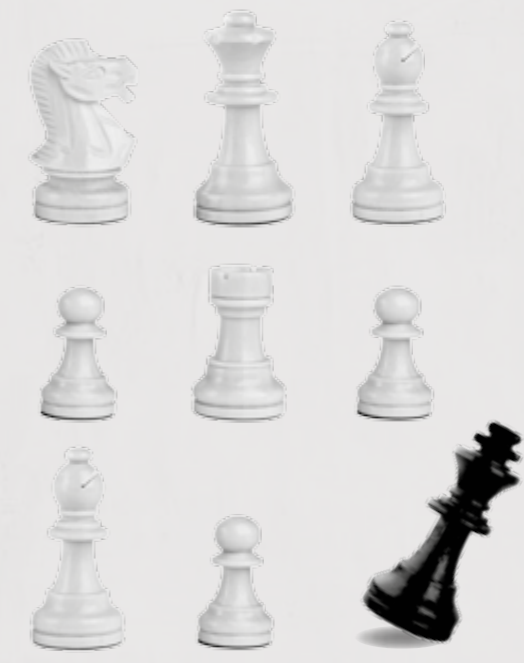
309U1R
CREMA OPACO NAT. RETT.
30x30 - 11¹³/₁₆"x11¹³/₁₆"

609U1R
CREMA OPACO NAT. RETT.
60x60 - 23⁵/₈"x23⁵/₈"

n e r o



o p a c o





T309U8
MOSAICO MANO GRIGIO.
30x30 - 11^{13/16}"x11^{13/16}"

609U9R
NERO OPACO NAT. RETT.
60x60 - 23^{5/8}"x23^{5/8}"

979U8R
GRIGIO OPACO NAT. RETT.
15x60 - 5^{7/8}"x23^{5/8}"

119U8R
GRIGIO OPACO NAT. RETT.
10x60 - 3^{15/16}"x23^{5/8}"



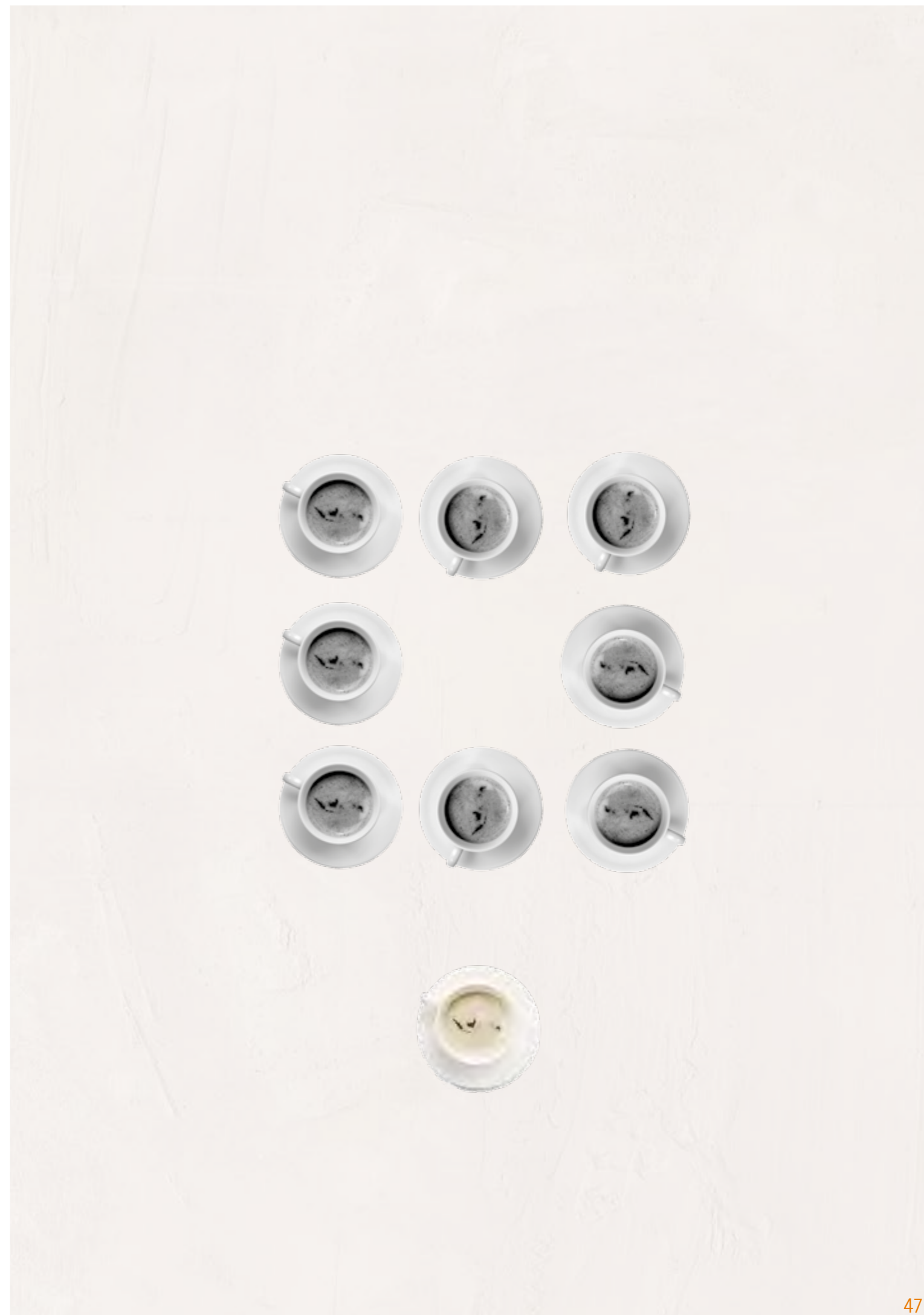
809U9R
NERO OPACO NAT. RETT.
80x80 - 31¹/₂"x31¹/₂"



b i a n c o



o p a c o





609U0R
BIANCO OPACO NAT. RETT.
60x60 - 23⁵/₈"x23⁵/₈"



309U0R
BIANCO OPACO NAT. RETT.
30x30 - 11^{13/16}"x11^{13/16}"

FANGO



809U4R Fango Opaco Nat. Rett.
80x80 - 31^{1/2}"x31^{1/2}"

79B ■



609U4R Fango Opaco Nat. Rett.
60x60 - 23^{5/8}"x23^{5/8}"

72 ■



489U4R Fango Opaco Nat. Rett.
40x80 - 15^{3/4}"x31^{1/2}"

79B ■



639U4R Fango Opaco Nat. Rett.
30x60 - 11^{13/16}"x23^{5/8}"

72 ■



309U4R Fango Opaco Nat. Rett.
30x30 - 11^{13/16}"x11^{13/16}"

68 ■



979U4R Fango Opaco Nat. Rett.
15x60 - 5^{7/8}"x23^{5/8}"

79B ■



119U4R Fango Opaco Nat. Rett.
10x60 - 3^{15/16}"x23^{5/8}"

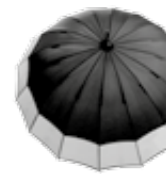
79B ■



609U4RZ Fango Opaco Nat. Rett.
60x60 - 23^{5/8}"x23^{5/8}"

72 ■

CENERE



809U2R Cenere Opaco Nat. Rett.
80x80 - 31^{1/2}"x31^{1/2}"

79B ■



609U2R Cenere Opaco Nat. Rett.
60x60 - 23^{5/8}"x23^{5/8}"

72 ■



489U2R Cenere Opaco Nat. Rett.
40x80 - 15^{3/4}"x31^{1/2}"

79B ■



639U2R Cenere Opaco Nat. Rett.
30x60 - 11^{13/16}"x23^{5/8}"

72 ■



309U2R Cenere Opaco Nat. Rett.
30x30 - 11^{13/16}"x11^{13/16}"

68 ■



979U2R Cenere Opaco Nat. Rett.
15x60 - 5^{7/8}"x23^{5/8}"

79B ■



119U2R Cenere Opaco Nat. Rett.
10x60 - 3^{15/16}"x23^{5/8}"

79B ■



609U2RZ Cenere Opaco Nat. Rett.
60x60 - 23^{5/8}"x23^{5/8}"

72 ■

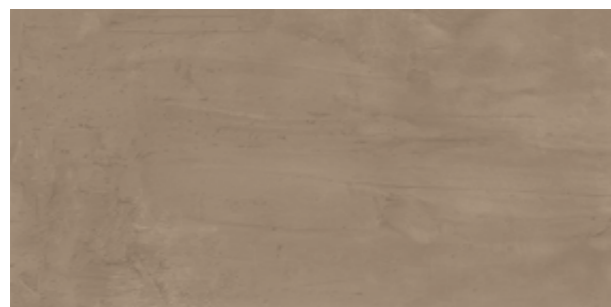
TERRA



809U6R Terra Opaco Nat. Rett.
80x80 - 31^{1/2}"x31^{1/2}" 79B ■



609U6R Terra Opaco Nat. Rett.
60x60 - 23^{5/8}"x23^{5/8}" 72 ■



489U6R Terra Opaco Nat. Rett.
40x80 - 15^{3/4}"x31^{1/2}" 79B ■



639U6R Terra Opaco Nat. Rett.
30x60 - 11^{13/16}"x23^{5/8}" 72 ■



309U6R Terra Opaco Nat. Rett.
30x30 - 11^{13/16}"x11^{13/16}" 68 ■

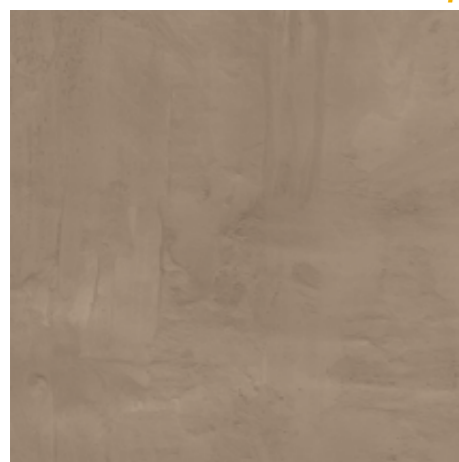


979U6R Terra Opaco Nat. Rett.
15x60 - 5^{7/8}"x23^{5/8}" 79B ■



119U6R Terra Opaco Nat. Rett.
10x60 - 3^{15/16}"x23^{5/8}" 79B ■

AntiSlip

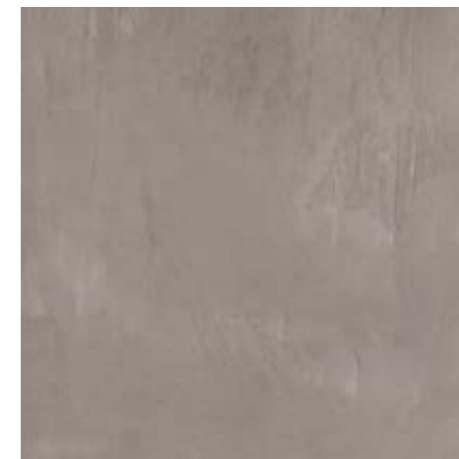


609U6RZ Terra Opaco Nat. Rett.
60x60 - 23^{5/8}"x23^{5/8}" 72 ■

GRIGIO



809U8R Grigio Opaco Nat. Rett.
80x80 - 31^{1/2}"x31^{1/2}" 79B ■



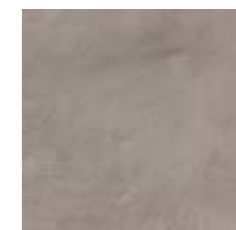
609U8R Grigio Opaco Nat. Rett.
60x60 - 23^{5/8}"x23^{5/8}" 72 ■



489U8R Grigio Opaco Nat. Rett.
40x80 - 15^{3/4}"x31^{1/2}" 79B ■



639U8R Grigio Opaco Nat. Rett.
30x60 - 11^{13/16}"x23^{5/8}" 72 ■



309U8R Grigio Opaco Nat. Rett.
30x30 - 11^{13/16}"x11^{13/16}" 68 ■

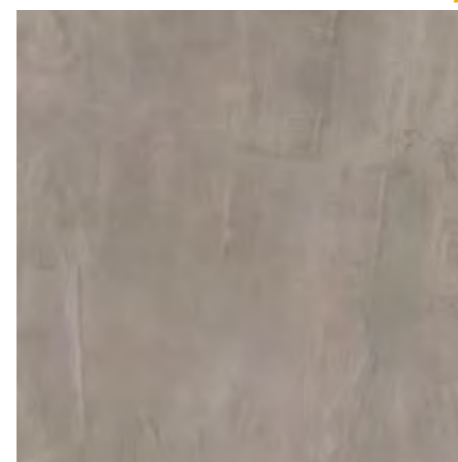


979U8R Grigio Opaco Nat. Rett.
15x60 - 5^{7/8}"x23^{5/8}" 79B ■



119U8R Grigio Opaco Nat. Rett.
10x60 - 3^{15/16}"x23^{5/8}" 79B ■

AntiSlip



609U8RZ Grigio Opaco Nat. Rett.
60x60 - 23^{5/8}"x23^{5/8}" 72 ■

CREMA



809U1R Crema Opaco Nat. Rett.
80x80 - 31^{1/2}"x31^{1/2}"

79B ■



609U1R Crema Opaco Nat. Rett.
60x60 - 23^{5/8}"x23^{5/8}"

72 ■



489U1R Crema Opaco Nat. Rett.
40x80 - 15^{3/4}"x31^{1/2}"

79B ■



639U1R Crema Opaco Nat. Rett.
30x60 - 11^{13/16}"x23^{5/8}"

72 ■



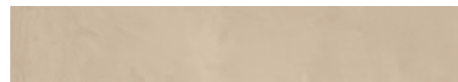
309U1R Crema Opaco Nat. Rett.
30x30 - 11^{13/16}"x11^{13/16}"

68 ■



979U1R Crema Opaco Nat. Rett.
15x60 - 5^{7/8}"x23^{5/8}"

79B ■



119U1R Crema Opaco Nat. Rett.
10x60 - 3^{15/16}"x23^{5/8}"

79B ■



609U1RZ Crema Opaco Nat. Rett.
60x60 - 23^{5/8}"x23^{5/8}"

72 ■

NERO



809U9R Nero Opaco Nat. Rett.
80x80 - 31^{1/2}"x31^{1/2}"

79B ■



609U9R Nero Opaco Nat. Rett.
60x60 - 23^{5/8}"x23^{5/8}"

72 ■



489U9R Nero Opaco Nat. Rett.
40x80 - 15^{3/4}"x31^{1/2}"

79B ■



639U9R Nero Opaco Nat. Rett.
30x60 - 11^{13/16}"x23^{5/8}"

72 ■



309U9R Nero Opaco Nat. Rett.
30x30 - 11^{13/16}"x11^{13/16}"

68 ■



979U9R Nero Opaco Nat. Rett.
15x60 - 5^{7/8}"x23^{5/8}"

79B ■



119U9R Nero Opaco Nat. Rett.
10x60 - 3^{15/16}"x23^{5/8}"

79B ■



609U9RZ Nero Opaco Nat. Rett.
60x60 - 23^{5/8}"x23^{5/8}"

72 ■

BIANCO



809U0R Bianco Opaco Nat. Rett.
80x80 - 31¹/₂"x31¹/₂"

79B ■



609U0R Bianco Opaco Nat. Rett.
60x60 - 23⁵/₈"x23⁵/₈"

72 ■



489U0R Bianco Opaco Nat. Rett.
40x80 - 15³/₄"x31¹/₂"

79B ■



639U0R Bianco Opaco Nat. Rett.
30x60 - 11¹³/₁₆"x23⁵/₈"

72 ■



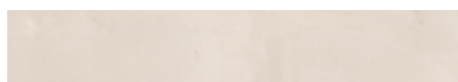
309U0R Bianco Opaco Nat. Rett.
30x30 - 11¹³/₁₆"x11¹³/₁₆"

68 ■



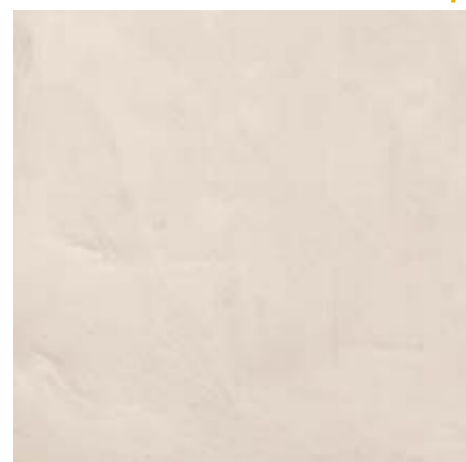
979U0R Bianco Opaco Nat. Rett.
15x60 - 5⁷/₈"x23⁵/₈"

79B ■



119U0R Bianco Opaco Nat. Rett.
10x60 - 3¹⁵/₁₆"x23⁵/₈"

79B ■



609U0RZ Bianco Opaco Nat. Rett.
60x60 - 23⁵/₈"x23⁵/₈"

72 ■

BUTTON



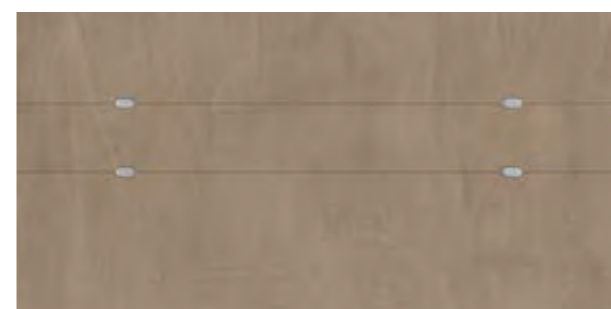
489U4RB Fango Opaco Nat. Rett.
40x80 - 15³/₄"x31¹/₂"
Pcs. Box 2

85A ■



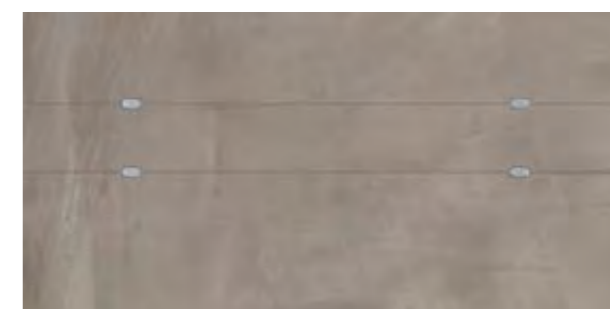
489U2RB Cenere Opaco Nat. Rett.
40x80 - 15³/₄"x31¹/₂"
Pcs. Box 2

85A ■



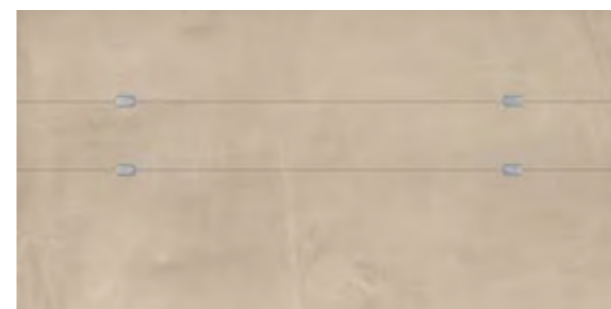
489U6RB Terra Opaco Nat. Rett.
40x80 - 15³/₄"x31¹/₂"
Pcs. Box 2

85A ■



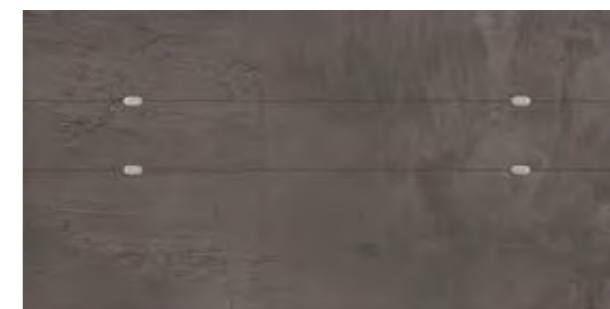
489U8RB Grigio Opaco Nat. Rett.
40x80 - 15³/₄"x31¹/₂"
Pcs. Box 2

85A ■



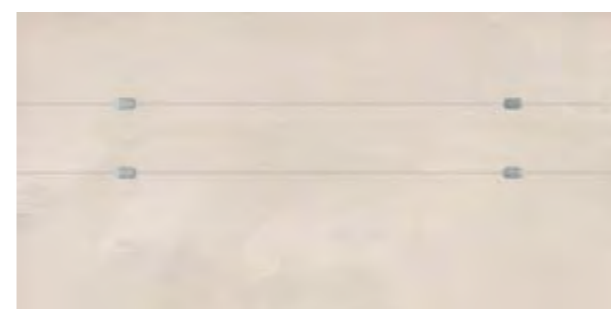
489U1RB Crema Opaco Nat. Rett.
40x80 - 15³/₄"x31¹/₂"
Pcs. Box 2

85A ■



489U9RB Nero Opaco Nat. Rett.
40x80 - 15³/₄"x31¹/₂"
Pcs. Box 2

85A ■



489U0RB Bianco Opaco Nat. Rett.
40x80 - 15³/₄"x31¹/₂"
Pcs. Box 2

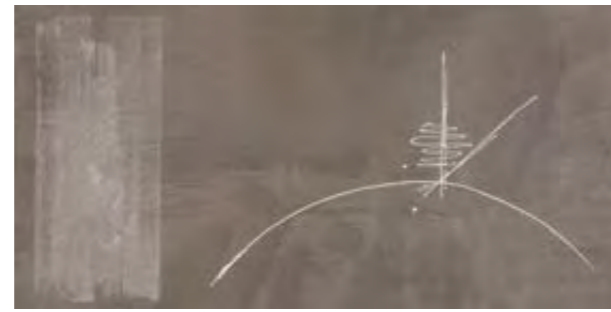
85A ■

ASIA DECORATO



489U4RH Fango Opaco Nat. Rett.
40x80 - 15³/₄"x31¹/₂"
Pcs. Box 2

891 ■



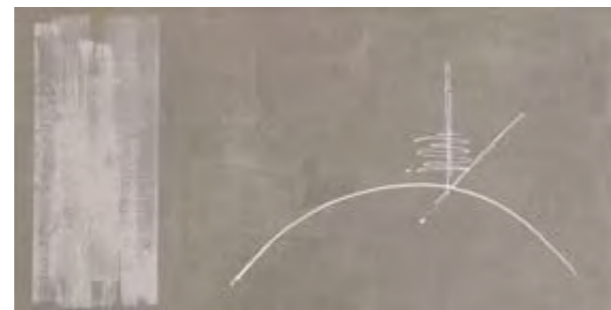
489U2RH Cenere Opaco Nat. Rett.
40x80 - 15³/₄"x31¹/₂"
Pcs. Box 2

891 ■



489U6RH Terra Opaco Nat. Rett.
40x80 - 15³/₄"x31¹/₂"
Pcs. Box 2

891 ■



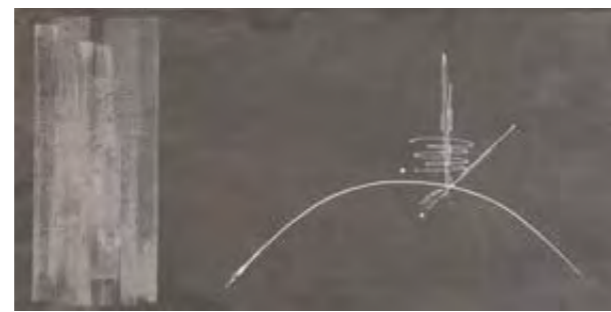
489U8RH Grigio Opaco Nat. Rett.
40x80 - 15³/₄"x31¹/₂"
Pcs. Box 2

891 ■



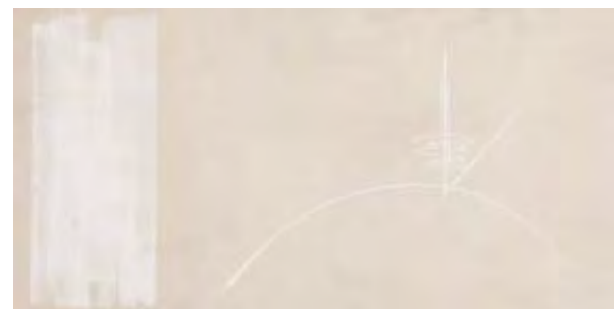
489U1RH Crema Opaco Nat. Rett.
40x80 - 15³/₄"x31¹/₂"
Pcs. Box 2

891 ■



489U9RH Nero Opaco Nat. Rett.
40x80 - 15³/₄"x31¹/₂"
Pcs. Box 2

891 ■



489U0RH Bianco Opaco Nat. Rett.
40x80 - 15³/₄"x31¹/₂"
Pcs. Box 2

891 ■

ASIA RIPOSO



489U4RT Fango Opaco Nat. Rett.
40x80 - 15³/₄"x31¹/₂"
Pcs. Box 2

871 ■



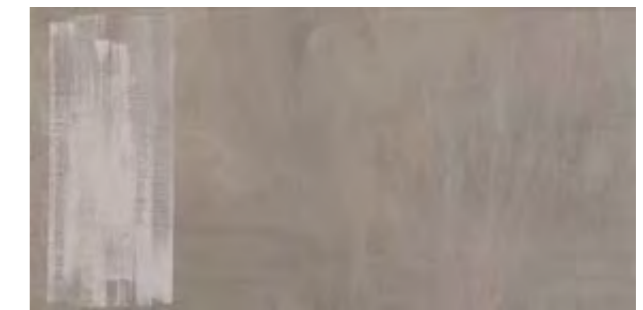
489U2RT Cenere Opaco Nat. Rett.
40x80 - 15³/₄"x31¹/₂"
Pcs. Box 2

871 ■



489U6RT Terra Opaco Nat. Rett.
40x80 - 15³/₄"x31¹/₂"
Pcs. Box 2

871 ■



489U8RT Grigio Opaco Nat. Rett.
40x80 - 15³/₄"x31¹/₂"
Pcs. Box 2

871 ■



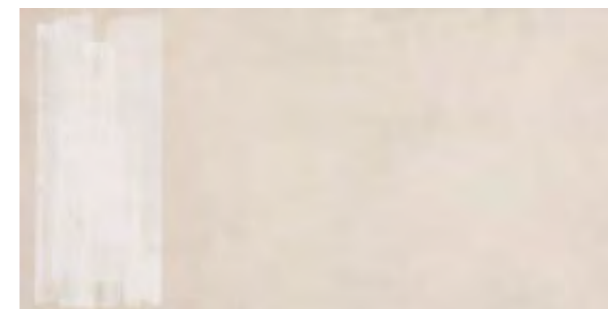
489U1RT Crema Opaco Nat. Rett.
40x80 - 15³/₄"x31¹/₂"
Pcs. Box 2

871 ■



489U9RT Nero Opaco Nat. Rett.
40x80 - 15³/₄"x31¹/₂"
Pcs. Box 2

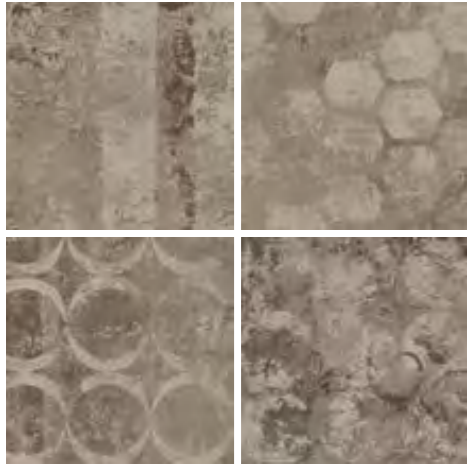
871 ■



489U0RT Bianco Opaco Nat. Rett.
40x80 - 15³/₄"x31¹/₂"
Pcs. Box 2

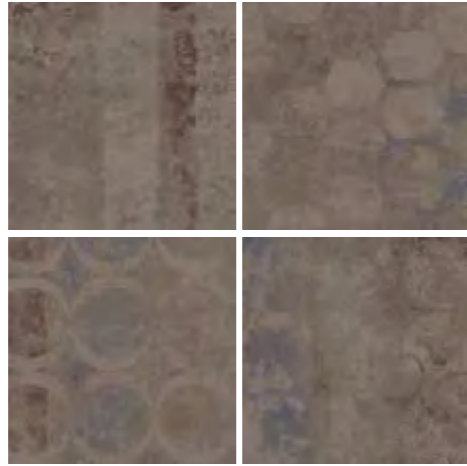
871 ■

POLVERE



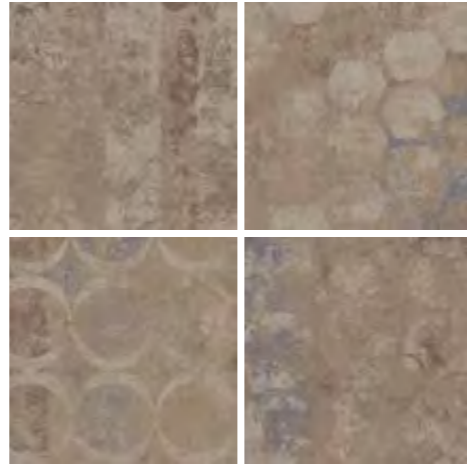
309U4RC Fango Opaco Nat. Rett.
30x30 - 11^{13/16}"x11^{13/16}"
Pcs. Box 4

47 ■



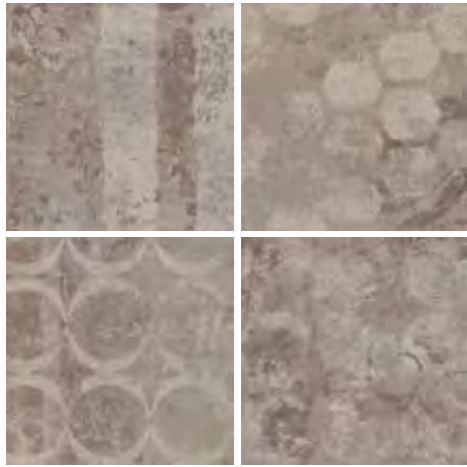
309U2RC Cenere Opaco Nat. Rett.
30x30 - 11^{13/16}"x11^{13/16}"
Pcs. Box 4

47 ■



309U6RC Terra Opaco Nat. Rett.
30x30 - 11^{13/16}"x11^{13/16}"
Pcs. Box 4

47 ■



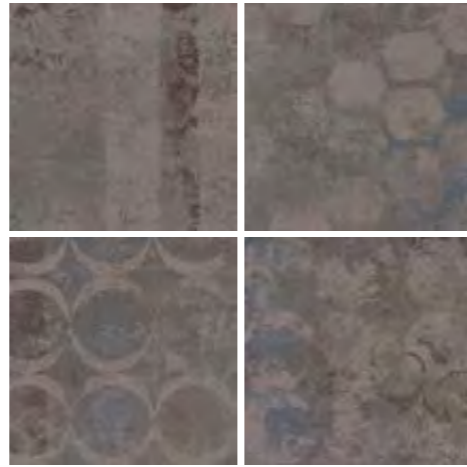
309U8RC Grigio Opaco Nat. Rett.
30x30 - 11^{13/16}"x11^{13/16}"
Pcs. Box 4

47 ■



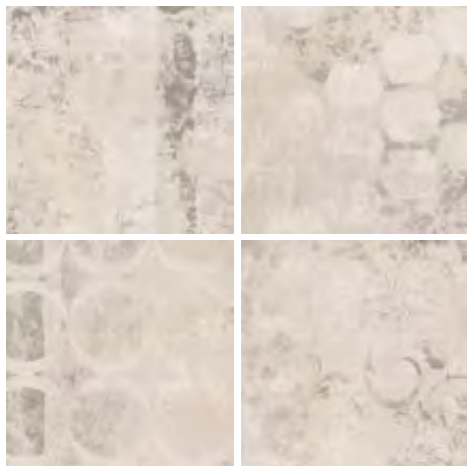
309U1RC Crema Opaco Nat. Rett.
30x30 - 11^{13/16}"x11^{13/16}"
Pcs. Box 4

47 ■



309U9RC Nero Opaco Nat. Rett.
30x30 - 11^{13/16}"x11^{13/16}"
Pcs. Box 4

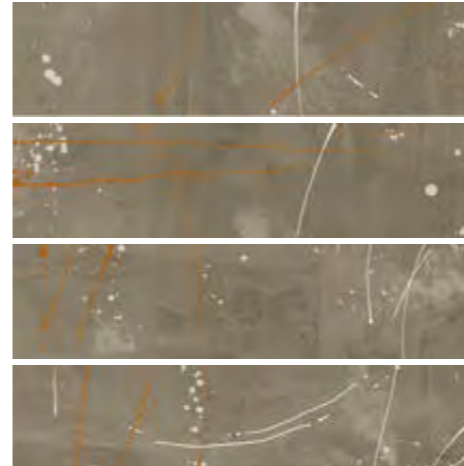
47 ■



309U0RC Bianco Opaco Nat. Rett.
30x30 - 11^{13/16}"x11^{13/16}"
Pcs. Box 4

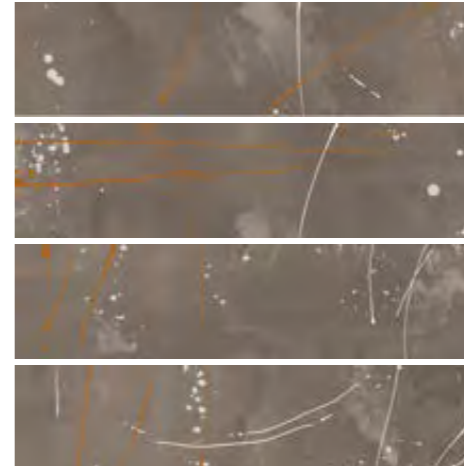
47 ■

99 SEGNI



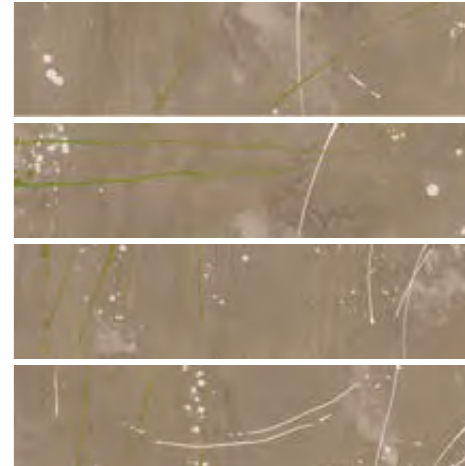
979U4RE Fango Opaco Nat. Rett.
15x60 - 5^{7/8}"x23^{5/8}"
Pcs. Box 4

45 ■



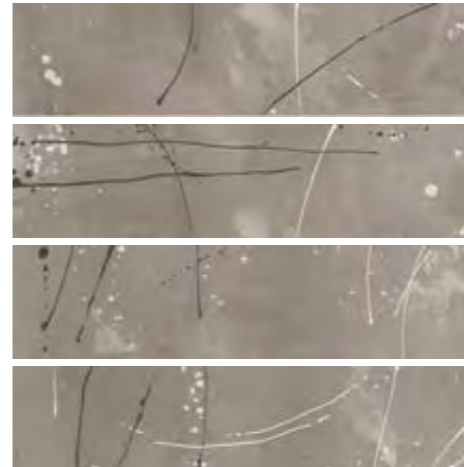
979U2RE Cenere Opaco Nat. Rett.
15x60 - 5^{7/8}"x23^{5/8}"
Pcs. Box 4

45 ■



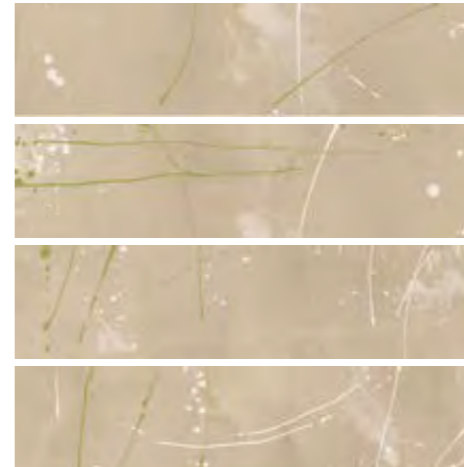
979U6RE Terra Opaco Nat. Rett.
15x60 - 5^{7/8}"x23^{5/8}"
Pcs. Box 4

45 ■



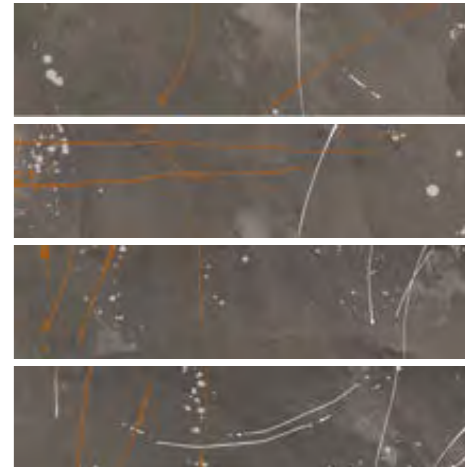
979U8RE Grigio Opaco Nat. Rett.
15x60 - 5^{7/8}"x23^{5/8}"
Pcs. Box 4

45 ■



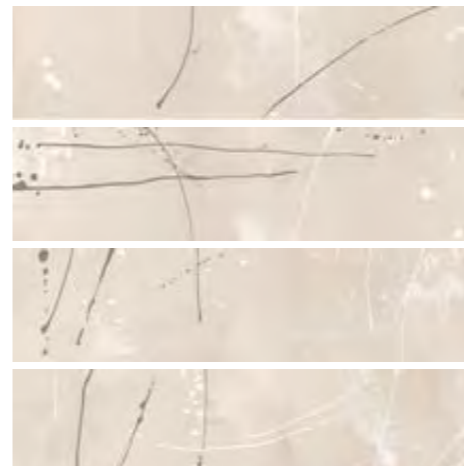
979U1RE Crema Opaco Nat. Rett.
15x60 - 5^{7/8}"x23^{5/8}"
Pcs. Box 4

45 ■



979U9RE Nero Opaco Nat. Rett.
15x60 - 5^{7/8}"x23^{5/8}"
Pcs. Box 4

45 ■



979U0RE Bianco Opaco Nat. Rett.
15x60 - 5^{7/8}"x23^{5/8}"
Pcs. Box 4

45 ■

decori

MOSAICO*



Z309U4 Fango Opaco Nat.
30x30 - 11^{13/16}"x11^{13/16}" 101 ■



Z309U2 Cenere Opaco Nat.
30x30 - 11^{13/16}"x11^{13/16}" 101 ■



Z309U6 Terra Opaco Nat.
30x30 - 11^{13/16}"x11^{13/16}" 101 ■



Z309U8 Grigio Opaco Nat.
30x30 - 11^{13/16}"x11^{13/16}" 101 ■



Z309U1 Crema Opaco Nat.
30x30 - 11^{13/16}"x11^{13/16}" 101 ■



Z309U9 Nero Opaco Nat.
30x30 - 11^{13/16}"x11^{13/16}" 101 ■



Z309U0 Bianco Opaco Nat.
30x30 - 11^{13/16}"x11^{13/16}" 101 ■

* Su rete in fibra
On fibre mesh backing
Sur filet en fibre de verre
Auf Glasfasernetz
Sobre malla de fibra
На волоконной сетке

MOSAICO 3D*



029U4RH Fango Opaco Nat.
20x20 - 7^{7/8}"x7^{7/8}"
Pcs. Box 4 102A ■



029U2RH Cenere Opaco Nat.
20x20 - 7^{7/8}"x7^{7/8}"
Pcs. Box 4 102A ■



029U1RH Crema Opaco Nat.
20x20 - 7^{7/8}"x7^{7/8}"
Pcs. Box 4 102A ■



029U9RH Nero Opaco Nat.
20x20 - 7^{7/8}"x7^{7/8}"
Pcs. Box 4 102A ■



029U6RH Terra Opaco Nat.
20x20 - 7^{7/8}"x7^{7/8}"
Pcs. Box 4 102A ■



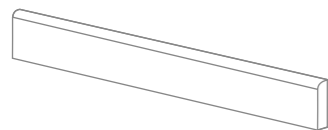
029U8RH Grigio Opaco Nat.
20x20 - 7^{7/8}"x7^{7/8}"
Pcs. Box 4 102A ■



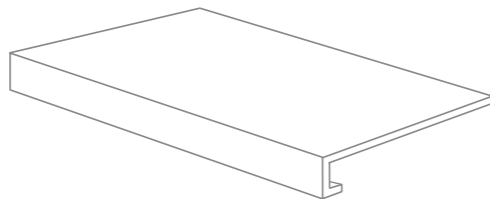
029U0RH Bianco Opaco Nat.
20x20 - 7^{7/8}"x7^{7/8}"
Pcs. Box 4 102A ■

* Su rete in fibra
On fibre mesh backing
Sur filet en fibre de verre
Auf Glasfasernetz
Sobre malla de fibra
На волоконной сетке

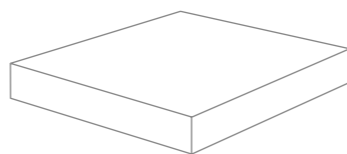
pezzi speciali



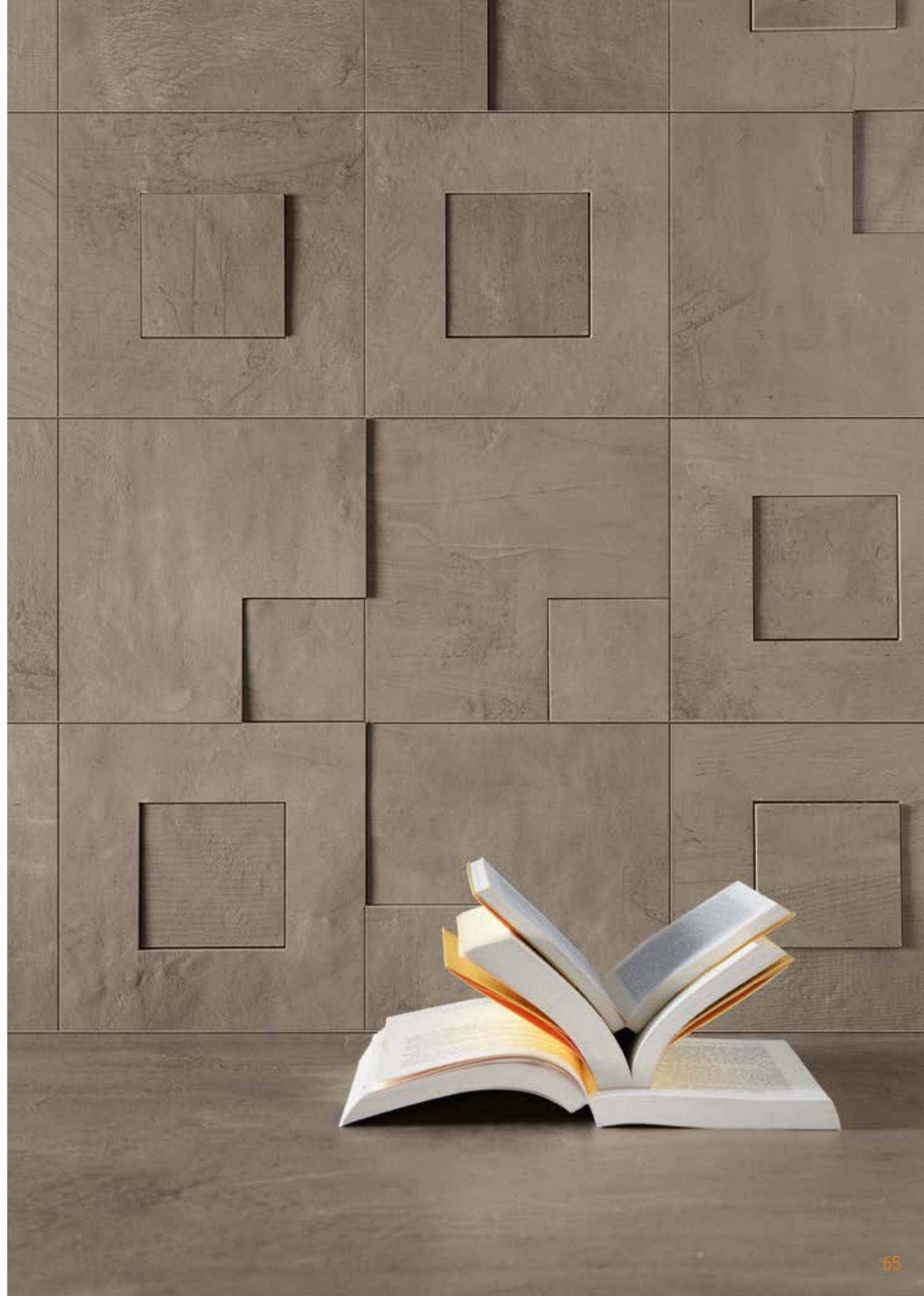
BATTISCOPA - SKIRTING
7,5x60 - 2^{15/16}"x23^{5/8}"
879U4R Fango Opaco Nat. Rett.
879U2R Cenere Opaco Nat. Rett.
879U6R Terra Opaco Nat. Rett.
879U8R Grigio Opaco Nat. Rett.
879U1R Crema Opaco Nat. Rett.
879U9R Nero Opaco Nat. Rett.
879U0R Bianco Opaco Nat. Rett.
Pcs. Box. 15 10 ■



GRADONE - STEP
33x60x3,2x3,2 - 12^{15/16}"x23^{5/8}"x1^{1/4}"x1^{1/4}"
1C9U4R Fango Opaco Nat. Rett.
1C9U2R Cenere Opaco Nat. Rett.
1C9U6R Terra Opaco Nat. Rett.
1C9U8R Grigio Opaco Nat. Rett.
1C9U1R Crema Opaco Nat. Rett.
1C9U9R Nero Opaco Nat. Rett.
1C9U0R Bianco Opaco Nat. Rett.
Pcs. Box. 4 82 ■



ANGOLARE - CORNER TILE
33x33x3,2x3,2 - 12^{15/16}"x12^{15/16}"x1^{1/4}"x1^{1/4}"
1A9U4R Fango Opaco Nat. Rett.
1A9U2R Cenere Opaco Nat. Rett.
1A9U6R Terra Opaco Nat. Rett.
1A9U8R Grigio Opaco Nat. Rett.
1A9U1R Crema Opaco Nat. Rett.
1A9U9R Nero Opaco Nat. Rett.
1A9U0R Bianco Opaco Nat. Rett.
Pcs. Box. 2 86 ■





CARATTERISTICHE TECNICHE Technical Features - Caracteristiques Techniques Technische Eigenschaften - Caracteristicas Tecnicas Технические Характеристики		NORMA Standard - Norme Norm - Norma - Норма	VALORI Value - Valeur Vorgabe - Valor - Средние
	PLANARITÀ Flatness - Planéité - Ebenflächigkeit - Planiyud Плоскостность	UNI EN ISO 10545/2	± 0,26% / ± 1,5mm
		ASTM C485 Warpage	
		Calibrated ± 0,75% (max ± 0,09 in)	-
		Rectified ± 0,40% (max ± 0,05 in-size ≤ 60cm) (max ± 0,07 in-size > 60cm)	± 0,25% (max ± 0,05 in-size ≤ 60cm) (max ± 0,07 in-size > 60cm)
	ASSORBIMENTO D'ACQUA - Valore medio in % Water absorption - Average value expressed in % Absorption d'eau - Valeur moyenne en % Wasseraufnahme - Durchschnittswert in % Absorción de agua - Valor medio en % Поглощение воды	UNI EN ISO 10545/3 ≤ 0,5 % ASTM C373	Conforme Compliant
	RESISTENZA ALLA FLESSIONE Modulus of rupture - Resistance a la flexion Biegefestigkeit - Resistencia a la flexion Прочность на изгиб	UNI EN ISO 10545/4	≥ 50 N/mm ²
	FORZA DI ROTTURA Breaking strength - Résistance à la rupture Bruchlast - Resistencia a la rotura Разрывное усилие	UNI EN ISO 10545/4 ASTM C648	≥ 2000 N 700 LBS
	RESISTENZA AL GELO Frost resistance - Résistance au gel - Frostbeständigkeit Resistencia a las heladas - Морозостойкость	UNI EN ISO 10545/12 ASTM C1026	Conforme Unaffected
	RESISTENZA CHIMICA ad alte e basse concentrazioni di acidi e basi Chemical resistance to high and low acid and basic concentrations Résistance chimique aux hautes et basses concentrations d'acides et de bases Chemikalienfestigkeit bei hohen und niedrigen Konzentrationen von Säuren und Basen Resistencia química con concentraciones altas y bajas de ácidos y bases Химическая стойкость к высоким и низким концентрациям кислот и щелочей	UNI EN ISO 10545/13 ASTM C-650	GA - GLA - GHA Unaffected
	RESISTENZA ALLE MACCHIE Stain resistance - Résistance aux taches Fleckenbeständigkeit - Resistencia a las manchas Стойкость к образованию пятен	UNI EN ISO 10545/14 CTI 81-7D	5 No Evident Variation
	COEFFICIENTE DI ATTRITO Slip resistance - Coefficient de glissement Rutschfestigkeit Barfußbereich Coeficiente de atrito medio - Коэффициент трения	DIN 51130	NAT. R10 ANTISLIP R11
		DIN 51097	B (A+B) C (A+B+C)
		ANSI A 137.1- 2012 DCOF (Section 9.6)	Dry ≥ 0,42 Wet ≥ 0,42 Dry ≥ 0,42 Wet ≥ 0,42
		B.C.R.A.	≥ 0,40 ≥ 0,40

PER MAGGIORI CHIARIMENTI SUI DATI TECNICI E SULLA GARANZIA CONSULTARE IL CATALOGO GENERALE IN VIGORE. For further information on technical specifications, please consult our up-dated general catalogue. Pour toutes informations supplémentaires sur les données techniques et sur les garanties, veuillez consulter le catalogue général en vigueur. - Für weitere Informationen über technische Daten und Garantie beziehen sie sich bitte auf den aktuellen Gesamtkatalog. Para ulteriores informaciones sobre los datos técnicos y la garantía, vease el catalogo general en vigor. Более подробную информацию о технических данных и гарантии смотрите в действующем сводном катал.

HT
HEAVY COMMERCIAL

Alto traffico pedonale
(es. stazioni ferroviarie, aeroporti, centri commerciali)

Heavy pedestrian traffic
(e.g. railway stations, airports, retail malls)

Piétinement intense
(ex. gares, aéroports, centres commerciaux)

Starker Fußgängerverkehr
(z.B. Bahnhöfe, Flughäfen, Einkaufszentren)

Alto tráfico peatonal
(por ej. estaciones de tren, aeropuertos, centros comerciales).

Интенсивное пешеходное движение
(напр., железнодорожные вокзалы, аэропорты)

IMBALLI E PESI Packing and weight - Emballages et poids - Verpackung und gewicht - Embalajes y pesos - УПАКОВКА И ВЕС									
Articolo Item Reference Artikel Artículo Артикула	Formato (cm) Size (cm) Format (cm) Tamaño (cm) Формат (cm)	Spessore (mm) Thickness (mm) Epaisseur (mm) Stärke (mm) Espesor (mm) Толщина (mm)	Pz. x Mq. Pieces x Sqm Pcs / M ² Stk. x Qm Pzs x Mc. Шт x Кв.М.	Pz. x Scat. Pieces x Box Pcs / Bte Stk. x Krt. Pzs x Caja Шт x Кор.	Mq. x Scat. Sqm x Box M ² / Bte Qm x Krt. Mc. x Caja Кв.М. x Кор.	Peso x Scat. (Kg) Weight x Box (Kg) Poids / Bte (Kg) Gewicht x Krt. (Kg) Peso x Caja (Kg) Вес x Кор. (Kg)	Scat. x Pal. Boxes x Pal. Bte / Pal. Krt. x Pal. Cajas x Pal. Кор. x Подд.	Mq. x Pal. Sqm x Pal. M ² / Pal. Qm x Pal. Mc. x Pal. Кв.М x Подд.	Peso x Pal.(Kg) Weight x Pal. (Kg) Poids / Pal. (Kg) Gewicht x Pal. (Kg) Peso x Pal. (Kg) Вес x Подд (Kg)
809U_R	80x80	10	1,56	2	1,280	32,00	40	51,20	1280
489U_R	40x80	10	3,13	3	0,960	24,00	28	26,88	672
609U_R/RZ	60x60	10	2,78	3	1,080	25,00	40	43,20	1000
639U_R	30x60	10	5,56	6	1,080	25,00	40	43,20	1000
309U_R	30x30	10	11,11	12	1,080	25,00	40	43,20	1000
979U_R	15x60	10	11,11	12	1,080	25,00	50	54,00	1250
119U_R	10x60	10	16,67	12	0,720	16,70	60	43,20	1002
Z309U_	30x30	10	11,11	5	0,450	10,50	-	-	-
029U_RH	20x20	10	25,00	4	0,160	4,10	-	-	-



a brand of EMILCERAMICA S.p.A.
Sede amministrativa/commerciale:
Via Ghiarola Nuova, 29/33
41042 Fiorano Modenese (MO) Italy
Tel. +39 0536 998701 - Fax +39 0536 998702
info@emilceramicagroup.it - www.cerviva.it